

## Recombinant Human HMGB3 Protein (His Tag)

**Catalog Number:** PKSH032546

**Note:** Centrifuge before opening to ensure complete recovery of vial contents.

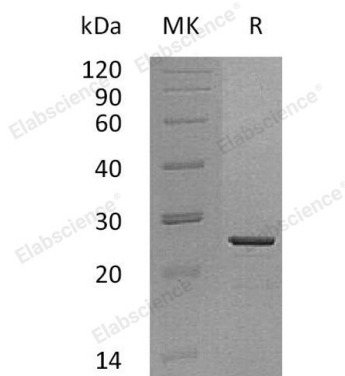
### Description

<b>Species</b>	Human
<b>Source</b>	HEK293 Cells-derived Human HMGB3 protein Met 1-Glu200, with an C-terminal His
<b>Calculated MW</b>	24.0 kDa
<b>Observed MW</b>	26 kDa
<b>Accession</b>	O15347
<b>Bio-activity</b>	Not validated for activity

### Properties

<b>Purity</b>	> 95 % as determined by reducing SDS-PAGE.
<b>Endotoxin</b>	< 1.0 EU per µg of the protein as determined by the LAL method.
<b>Storage</b>	Generally, lyophilized proteins are stable for up to 12 months when stored at -20 to -80 °C. Reconstituted protein solution can be stored at 4-8°C for 2-7 days. Aliquots of reconstituted samples are stable at < -20°C for 3 months.
<b>Shipping</b>	This product is provided as lyophilized powder which is shipped with ice packs.
<b>Formulation</b>	Lyophilized from a 0.2 µm filtered solution of PBS, pH 7.4. Normally 5% - 8% trehalose, mannitol and 0.01% Tween 80 are added as protectants before lyophilization.
<b>Reconstitution</b>	Please refer to the specific buffer information in the printed manual. Please refer to the printed manual for detailed information.

### Data



> 95 % as determined by reducing SDS-PAGE.

### Background

High Mobility Group Protein B3 (HMGB3) belongs to the HMGB family. Members of the HMGB box subfamily are thought to have an important role in DNA replication, nucleosome assembly and transcription. HMGB3 binds preferentially single-stranded DNA and unwinds double stranded DNA. HMGB3 consists of 200 amino acids and is localized to the cell nucleus. It contains two HMGB box DNA-binding domain. HMGB3 binds preferentially single-stranded DNA and unwinds double stranded DNA.

### For Research Use Only

Toll-free: 1-888-852-8623  
Web: [www.elabscience.com](http://www.elabscience.com)

Tel: 1-832-243-6086  
Email: [techsupport@elabscience.com](mailto:techsupport@elabscience.com)

Fax: 1-832-243-6017