

## BECN1 Monoclonal Antibody

catalog number: E-AB-22139

**Note:** Centrifuge before opening to ensure complete recovery of vial contents.

### Description

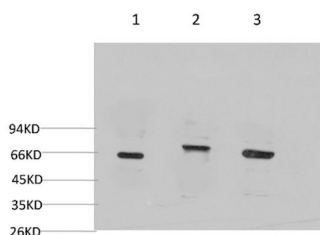
<b>Reactivity</b>	Human;Mouse;Rat
<b>Immunogen</b>	Synthetic Peptide of Beclin-1
<b>Host</b>	Mouse
<b>Isotype</b>	IgG
<b>Clone</b>	3C6
<b>Purification</b>	Protein A purification
<b>Buffer</b>	Phosphate buffered solution, pH 7.4, containing 0.05% stabilizer, 0.5% protein protectant and 50% glycerol.

### Applications

### Recommended Dilution

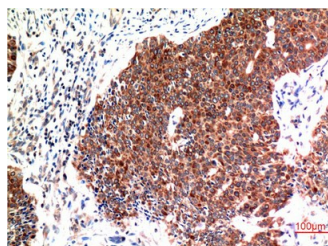
<b>WB</b>	1:1000-2000
<b>IHC</b>	1:100-200

### Data

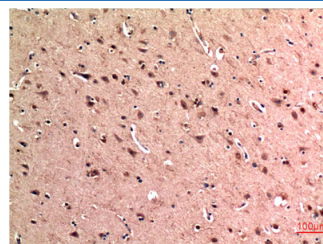


Western Blot analysis of 1) 293T, 2) C2C12, 3) Rat brain using BECN1 Monoclonal Antibody at dilution of 1:2000.

**Observed-MW:60 kDa**



Immunohistochemistry of paraffin-embedded Human breast carcinoma tissue using BECN1 Monoclonal Antibody at dilution of 1:200.



Immunohistochemistry of paraffin-embedded Human brain tissue using BECN1 Monoclonal Antibody at dilution of 1:200.

### Preparation & Storage

<b>Storage</b>	Store at -20°C Valid for 12 months. Avoid freeze / thaw cycles.
<b>Shipping</b>	The product is shipped with ice pack, upon receipt, store it immediately at the temperature recommended.

### Background

### For Research Use Only

Beclin-1 (BECN1), also known as ATG6 or VPS30, has a central role in autophagy, a process of programmed cell survival, which is increased during periods of cell stress and extinguished during the cell cycle. Beclin-1, may play a role in antiviral host defense. It protects against infection by a neurovirulent strain of Sindbis virus. Beclin-1 participates in the regulation of autophagy and has an important role in development, tumorigenesis, and neurodegeneration. A progressively reduced Beclin-1 expression is reported to correlate with the primary tumor growth of squamous cell carcinoma and adenocarcinoma of the lung. Caspase-mediated cleavage of Beclin 1 promotes crosstalk between apoptosis and autophagy.

## For Research Use Only

Toll-free: 1-888-852-8623  
Web: [www.elabscience.com](http://www.elabscience.com)

Tel: 1-832-243-6086  
Email: [techsupport@elabscience.com](mailto:techsupport@elabscience.com)

Fax: 1-832-243-6017

Rev. V1.8