

## KIF5B Polyclonal Antibody

**catalog number: E-AB-65249**

**Note:** Centrifuge before opening to ensure complete recovery of vial contents.

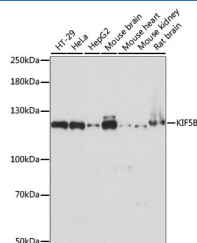
### Description

<b>Reactivity</b>	Human;Mouse;Rat
<b>Immunogen</b>	Recombinant fusion protein of human KIF5B (NP_004512.1).
<b>Host</b>	Rabbit
<b>Isotype</b>	IgG
<b>Purification</b>	Affinity purification
<b>Buffer</b>	Phosphate buffered solution, pH 7.4, containing 0.05% stabilizer and 50% glycerol.

### Applications

<b>WB</b>	1:500-1:2000
<b>IHC</b>	1:50-1:100

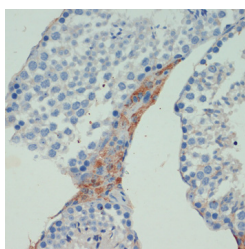
### Data



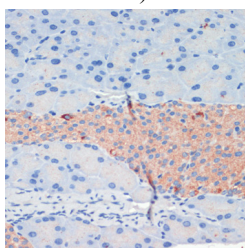
Western blot analysis of extracts of various cell lines using KIF5B Polyclonal Antibody at dilution of 1:1000.

**Observed-MW:110 kDa**

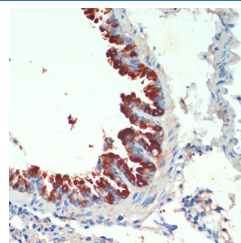
**Calculated-MW:109 kDa**



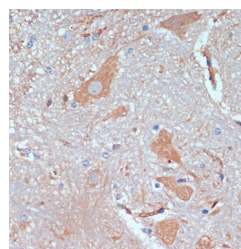
Immunohistochemistry of paraffin-embedded Mouse testis using KIF5B Polyclonal Antibody at dilution of 1:200 (40x lens).



Immunohistochemistry of paraffin-embedded Mouse pancreas using KIF5B Polyclonal Antibody at dilution of 1:200 (40x lens).



Immunohistochemistry of paraffin-embedded Mouse lung using KIF5B Polyclonal Antibody at dilution of 1:200 (40x lens).



Immunohistochemistry of paraffin-embedded Mouse spinal cord using KIF5B Polyclonal Antibody at dilution of 1:200 (40x lens).

### For Research Use Only

## Preparation & Storage

**Storage**

Store at -20°C Valid for 12 months. Avoid freeze / thaw cycles.

**Shipping**

The product is shipped with ice pack, upon receipt, store it immediately at the temperature recommended.

## Background

KIF5B (Kinesin Family Member 5B) is a Protein Coding gene. Diseases associated with KIF5B include Pulmonary Large Cell Neuroendocrine Carcinoma and Occipital Lobe Neoplasm. Among its related pathways are Signaling by GPCR and RHO GTPases activate KTN1. Gene Ontology (GO) annotations related to this gene include ATPase activity and microtubule motor activity. An important paralog of this gene is KIF5C.

## For Research Use Only