

Recombinant Human Retbindin/RTBDN Protein (His Tag)

Catalog Number: PKSH032993

Note: Centrifuge before opening to ensure complete recovery of vial contents.

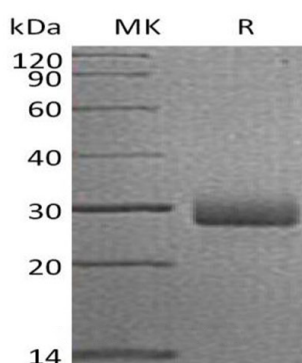
Description

Species	Human
Source	HEK293 Cells-derived Human Retbindin;RTBDN protein Ser31-Pro229, with an C-terminal His
Calculated MW	22.3 kDa
Observed MW	30 kDa
Accession	Q9BSG5
Bio-activity	Not validated for activity

Properties

Purity	> 95 % as determined by reducing SDS-PAGE.
Endotoxin	< 1.0 EU per µg of the protein as determined by the LAL method.
Storage	Generally, lyophilized proteins are stable for up to 12 months when stored at -20 to -80 °C. Reconstituted protein solution can be stored at 4-8°C for 2-7 days. Aliquots of reconstituted samples are stable at < -20°C for 3 months.
Shipping	This product is provided as lyophilized powder which is shipped with ice packs.
Formulation	Lyophilized from a 0.2 µm filtered solution of 20mM PB,150mM NaCl,pH7.4. Normally 5% - 8% trehalose, mannitol and 0.01% Tween 80 are added as protectants before lyophilization.
	Please refer to the specific buffer information in the printed manual.
Reconstitution	Please refer to the printed manual for detailed information.

Data



> 95 % as determined by reducing SDS-PAGE.

Background

Human Retbindin is a 229 amino acid secreted protein that belongs to the folate receptor family. The gene that encodes retbindin exists as two alternatively spliced isoforms. Retbindin is first expressed in retina. It may play a role in binding retinoids and other carotenoids as it shares homology with;riboflavin binding proteins. RTBDN gene was first identified in a study of human eye tissues.

For Research Use Only

Toll-free: 1-888-852-8623
Web: www.elabscience.com

Tel: 1-832-243-6086
Email: techsupport@elabscience.com

Fax: 1-832-243-6017