

## Recombinant Human LCAT Protein (His Tag)

**Catalog Number:** PKSH032685

**Note:** Centrifuge before opening to ensure complete recovery of vial contents.

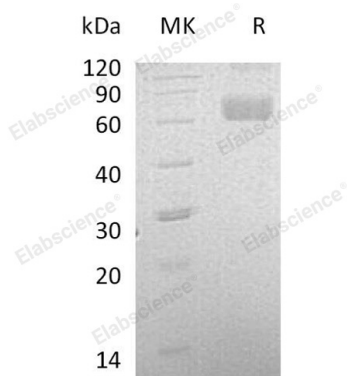
### Description

<b>Species</b>	Human
<b>Source</b>	HEK293 Cells-derived Human LCAT protein Phe25-Glu440, with an C-terminal His
<b>Calculated MW</b>	48.1 kDa
<b>Observed MW</b>	66 kDa
<b>Accession</b>	P04180
<b>Bio-activity</b>	Not validated for activity

### Properties

<b>Purity</b>	> 95 % as determined by reducing SDS-PAGE.
<b>Endotoxin</b>	< 1.0 EU per µg of the protein as determined by the LAL method.
<b>Storage</b>	Generally, lyophilized proteins are stable for up to 12 months when stored at -20 to -80 °C. Reconstituted protein solution can be stored at 4-8°C for 2-7 days. Aliquots of reconstituted samples are stable at < -20°C for 3 months.
<b>Shipping</b>	This product is provided as lyophilized powder which is shipped with ice packs.
<b>Formulation</b>	Lyophilized from a 0.2 µm filtered solution of 4mM HCl. Normally 5% - 8% trehalose, mannitol and 0.01% Tween 80 are added as protectants before lyophilization.
	Please refer to the specific buffer information in the printed manual.
<b>Reconstitution</b>	Please refer to the printed manual for detailed information.

### Data



> 95 % as determined by reducing SDS-PAGE.

### Background

Lipase family. The gene encoding this protein is expressed mainly in brain, liver and testes, followed by secreting into plasma and cerebral spinal fluid. The esterification of cholesterol is required for cholesterol transport. LCAT is a central enzyme in the extracellular metabolism of plasma lipoproteins. Defects in LCAT are the cause of lecithin-cholesterol acyltransferase deficiency (LCATD) and a cause of fish-eye disease (FED).

### For Research Use Only