

# Recombinant Human MICB Protein (His & Fc Tag)

Catalog Number: PKSH031444



**Note:** Centrifuge before opening to ensure complete recovery of vial contents.

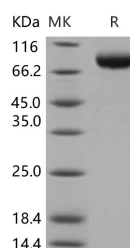
## Description

<b>Synonyms</b>	PERB11.2
<b>Species</b>	Human
<b>Expression Host</b>	HEK293 Cells
<b>Sequence</b>	Met 1-Gly 298
<b>Accession</b>	NP_005922.2
<b>Calculated Molecular Weight</b>	59.5 kDa
<b>Observed molecular weight</b>	80-90 kDa
<b>Tag</b>	C-His-Fc
<b>Bioactivity</b>	Immobilized human His-NKG2D (78-216) at 10 µg/ml (100 µl/well) can bind human MICB-Fch, The EC50 of human MICB-Fch is 15.9-37.1 ng/ml.

## Properties

<b>Purity</b>	> 98 % as determined by reducing SDS-PAGE.
<b>Endotoxin</b>	< 1.0 EU per µg of the protein as determined by the LAL method.
<b>Storage</b>	Generally, lyophilized proteins are stable for up to 12 months when stored at -20 to -80°C. Reconstituted protein solution can be stored at 4-8°C for 2-7 days. Aliquots of reconstituted samples are stable at < -20°C for 3 months.
<b>Shipping</b>	This product is provided as lyophilized powder which is shipped with ice packs.
<b>Formulation</b>	Lyophilized from sterile PBS, pH 7.4 Normally 5 % - 8 % trehalose, mannitol and 0.01% Tween80 are added as protectants before lyophilization. Please refer to the specific buffer information in the printed manual.
<b>Reconstitution</b>	Please refer to the printed manual for detailed information.

## Data



> 98 % as determined by reducing SDS-PAGE.

## Background

MHC class I polypeptide-related sequence B; also known as MICB; is a heavily glycosylated protein serving as a ligand for the type II receptor NKG2D. MICB shares 85% amino acid identity with MICA; a closely related protein; both of which contain three extracellular immunoglobulin-like domains; but without capacity to bind peptide or interact with beta-2-microglobulin. acting as a stress-induced self-antigen; binding of MICB to the NKG2D receptor activates the cytolytic response of natural killer (NK) cells; CD8+ $\alpha\beta$  T cells; and  $\gamma\delta$  T cells on which the receptor is expressed. MICA/B are minimally expressed on normal cells; but are frequently expressed on epithelial tumors and can be induced

## For Research Use Only

A Reliable Research Partner in Life Science and Medicine

Toll-free: 1-888-852-8623

Web: [www.elabsience.com](http://www.elabsience.com)

Tel: 1-832-243-6086

Email: [techsupport@elabsience.com](mailto:techsupport@elabsience.com)

Fax: 1-832-243-6017

# Recombinant Human MICB Protein (His & Fc Tag)

Catalog Number: PKSH031444



by bacterial and viral infections. MICA/B recognition thus is involved in tumor surveillance; viral infections; and autoimmune diseases.

---

## For Research Use Only

A Reliable Research Partner in Life Science and Medicine

Toll-free: 1-888-852-8623

Tel: 1-832-243-6086

Fax: 1-832-243-6017

Web: [www.elabscience.com](http://www.elabscience.com)

Email: [techsupport@elabscience.com](mailto:techsupport@elabscience.com)