

Recombinant Human FBPase 1/FBP1 Protein (E. coli, His Tag)

Catalog Number: PKSH033276

Note: Centrifuge before opening to ensure complete recovery of vial contents.

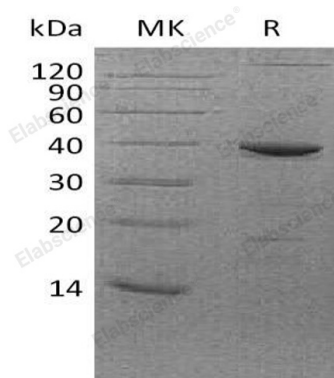
Description

Species	Human
Source	E.coli-derived Human FBPase 1/FBP1 protein Ala2-Gln338, with an C-terminal His
Calculated MW	37.9 kDa
Observed MW	38 kDa
Accession	P09467
Bio-activity	Not validated for activity

Properties

Purity	> 95 % as determined by reducing SDS-PAGE.
Concentration	Subject to label value.
Endotoxin	< 1.0 EU per µg of the protein as determined by the LAL method.
Storage	Store at < -20°C, stable for 6 months. Please minimize freeze-thaw cycles.
Shipping	This product is provided as liquid. It is shipped at frozen temperature with blue ice/gel packs. Upon receipt, store it immediately at < -20°C.
Formulation	Supplied as a 0.2 µm filtered solution of 20mM Tris-HCl, 200mM NaCl, 1mM DTT, 1mM EDTA, 20% Glycerol, pH 8.0.

Data



> 95 % as determined by reducing SDS-PAGE.

Background

Fructose-1,6-Bisphosphatase 1 (FBPase 1) is a member of the FBPase class 1 family. FBPase 1 is a gluconeogenesis regulatory protein; which catalyzes the hydrolysis of fructose 1,6-bisphosphate to fructose 6-phosphate and inorganic phosphate. FBPase 1 can assume an active R-state; or an inactive T-state. FBPase 1 deficiency is inherited as an autosomal recessive disorder mainly in the liver and causes life-threatening episodes of hypoglycemia and metabolic acidosis in newborn infants or young children. FBPase 1 coupled with phosphofructokinase (PFK) is involved in the metabolism of pancreatic islet cells.