

CFP Polyclonal Antibody

catalog number: **E-AB-92647**

Note: Centrifuge before opening to ensure complete recovery of vial contents.

Description

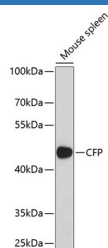
Reactivity	Human;Mouse;Rat
Immunogen	Recombinant fusion protein of human CFP
Host	Rabbit
Isotype	IgG
Purification	Affinity purification
Buffer	Phosphate buffered solution, pH 7.4, containing 0.05% stabilizer and 50% glycerol.

Applications

Recommended Dilution

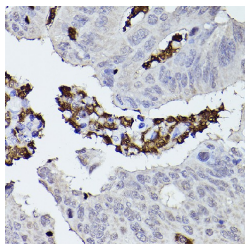
WB	1:500-1:2000
IHC	1:50-1:200
IF	1:50-1:200

Data

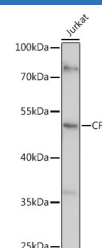
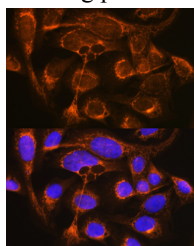


Western blot analysis of extracts of mouse spleen using CFP Polyclonal Antibody at 1:1000 dilution.

Observed-MW:50 kDa
Calculated-MW:51 kDa

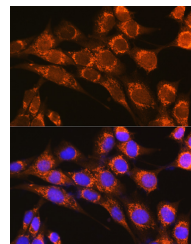


Immunohistochemistry of paraffin-embedded human colon carcinoma using CFP Polyclonal Antibody at dilution of 1:50 (40x lens). Perform high pressure antigen retrieval with 10 mM citrate buffer pH 6.0 before commencing with IHC staining protocol.



Western blot analysis of extracts of Jurkat cells using CFP Polyclonal Antibody at 1:1000 dilution.

Observed-MW:50 kDa
Calculated-MW:51 kDa



Immunofluorescence analysis of NIH-3T3 cells using CFP Polyclonal Antibody at dilution of 1:100 (40x lens). Blue: DAPI for nuclear staining.

For Research Use Only

Immunofluorescence analysis of U2OS cells using CFP
Polyclonal Antibody at dilution of 1:100 (40x lens). Blue:
DAPI for nuclear staining.

Preparation & Storage

Storage	Store at -20°C Valid for 12 months. Avoid freeze / thaw cycles.
Shipping	The product is shipped with ice pack, upon receipt, store it immediately at the temperature recommended.

Background

This gene encodes a plasma glycoprotein that positively regulates the alternative complement pathway of the innate immune system. This protein binds to many microbial surfaces and apoptotic cells and stabilizes the C3- and C5-convertase enzyme complexes in a feedback loop that ultimately leads to formation of the membrane attack complex and lysis of the target cell. Mutations in this gene result in two forms of properdin deficiency, which results in high susceptibility to meningococcal infections. Multiple alternatively spliced variants, encoding the same protein, have been identified.

For Research Use Only