

## KIF4A Polyclonal Antibody

catalog number: **E-AB-63295**

**Note:** Centrifuge before opening to ensure complete recovery of vial contents.

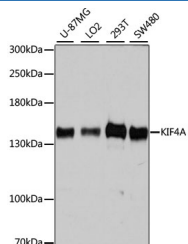
### Description

<b>Reactivity</b>	Human;Mouse;Rat
<b>Immunogen</b>	Recombinant fusion protein of human KIF4A (NP_036442.3).
<b>Host</b>	Rabbit
<b>Isotype</b>	IgG
<b>Purification</b>	Affinity purification
<b>Buffer</b>	Phosphate buffered solution, pH 7.4, containing 0.05% stabilizer and 50% glycerol.

### Applications

Applications	Recommended Dilution
<b>WB</b>	1:1000-1:3000
<b>IHC</b>	1:50-1:200
<b>IF</b>	1:100-1:200

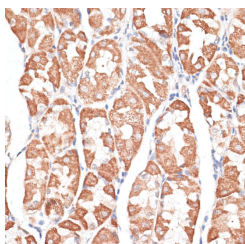
### Data



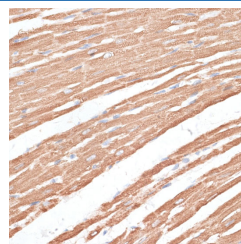
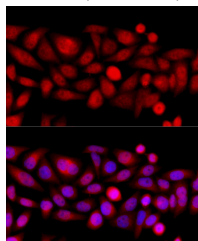
Western blot analysis of extracts of various cell lines using KIF4A Polyclonal Antibody at dilution of 1:7000.

**Observed-MW: 140 kDa**

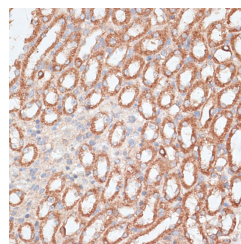
**Calculated-MW: 128 kDa/139 kDa**



Immunohistochemistry of paraffin-embedded Human stomach using KIF4A Polyclonal Antibody at dilution of 1:100 (40x lens).



Immunohistochemistry of paraffin-embedded Rat heart using KIF4A Polyclonal Antibody at dilution of 1:100 (40x lens).



Immunohistochemistry of paraffin-embedded Mouse kidney using KIF4A Polyclonal Antibody at dilution of 1:100 (40x lens).

### For Research Use Only

Immunofluorescence analysis of HeLa cells using KIF4A  
Polyclonal Antibody at dilution of 1:100 (40x lens). Blue:  
DAPI for nuclear staining.

## Preparation & Storage

**Storage**

Store at -20°C Valid for 12 months. Avoid freeze / thaw cycles.

**Shipping**

The product is shipped with ice pack, upon receipt, store it immediately at the temperature recommended.

## Background

This gene encodes a member of the kinesin 4 subfamily of kinesin related proteins. The encoded protein is an ATP dependent microtubule-based motor protein that is involved in the intracellular transport of membranous organelles. This protein also associates with condensed chromosome arms and may be involved in maintaining chromosome integrity during mitosis. This protein may also be involved in the organization of the central spindle prior to cytokinesis. A pseudogene of this gene is found on chromosome X.

## For Research Use Only