

## RBM45 Polyclonal Antibody

catalog number: **E-AB-90697**

**Note:** Centrifuge before opening to ensure complete recovery of vial contents.

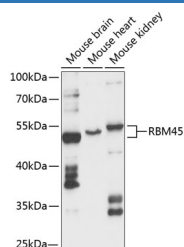
### Description

<b>Reactivity</b>	Mouse
<b>Immunogen</b>	Recombinant fusion protein of human RBM45
<b>Host</b>	Rabbit
<b>Isotype</b>	IgG
<b>Purification</b>	Affinity purification
<b>Buffer</b>	Phosphate buffered solution, pH 7.4, containing 0.05% stabilizer and 50% glycerol.

### Applications

<b>WB</b>	1:500-1:2000
-----------	--------------

### Data



Western blot analysis of extracts of various cell lines using RBM45 Polyclonal Antibody at 1:3000 dilution.

**Observed-MV:52-54 kDa**

**Calculated-MV:37 kDa/53 kDa**

### Preparation & Storage

<b>Storage</b>	Store at -20°C Valid for 12 months. Avoid freeze / thaw cycles.
<b>Shipping</b>	The product is shipped with ice pack, upon receipt, store it immediately at the temperature recommended.

### Background

This gene encodes a member of the RNA recognition motif (RRM)-type RNA-binding family of proteins. This protein exhibits preferential binding to poly(C) RNA. Initial cloning of this gene found that the rat ortholog was dynamically expressed in the developing rat brain. This protein has been localized to inclusion bodies in the brain and spinal cord of amyotrophic lateral sclerosis and Alzheimer's patients. A pseudogene has been identified on chromosome 8.

### For Research Use Only