

## PE/Cyanine5 Anti-Mouse CD106 Antibody[M/K-2.7]

**Catalog Number:** E-AB-F1091UG

**Note:** Centrifuge before opening to ensure complete recovery of vial contents.

### Description

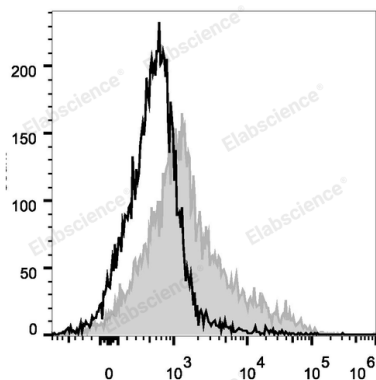
<b>Reactivity</b>	Mouse
<b>Host</b>	Rat
<b>Isotype</b>	Rat IgG1, $\kappa$
<b>Clone No.</b>	M/K-2.7
<b>Isotype Control</b>	PE/Cyanine5 Rat IgG1, $\kappa$ Isotype Control[HRPN] [Product E-AB-F09823G]
<b>Conjugation</b>	PE/Cyanine 5
<b>Conjugation Information</b>	PE/Cyanine5 is designed to be excited by the Blue (488 nm), Green (532 nm) and yellow-green (561 nm) lasers and detected using an optical filter centered near 670 nm (e.g., a 690/50 nm bandpass filter).
<b>Storage Buffer</b>	Phosphate buffered solution, pH 7.2, containing 0.09% stabilizer and 1% protein protectant.

### Applications

### Recommended usage

<b>FCM</b>	Each lot of this antibody is quality control tested by flow cytometric analysis. Please check your vial before the experiment. Since applications vary, the appropriate dilutions must be determined for individual use. We suggest each investigator should titrate the reagent to obtain optimal results [The recommended concentration is 0.1-1 $\mu\text{g}/10^6$ cells in 100 $\mu\text{L}$ volume].
------------	---

### Data



C57BL/6 murine bone marrow cells are stained with PE/Cyanine5 Anti-Mouse CD106 Antibody (filled gray histogram). Unstained bone marrow cells (empty black histogram) are used as control.

### Preparation & Storage

<b>Storage</b>	Keep as concentrated solution. This product can be stored at 2-8°C for 12 months. Please protected from prolonged exposure to light and do not freeze.
<b>Shipping</b>	Ice bag

### Antigen Information

<b>Alternate Names</b>	CD106;V-CAM 1;VCAM-1;Vascular cell adhesion protein 1;Vcam 1
<b>Uniprot ID</b>	P29533

### For Research Use Only

**Gene ID**

22329

**Background**

CD106 is a 110 kD glycosylphosphatidylinositol (GPI)-linked transmembrane protein, also known as VCAM-1 and INCAM-110. It is constitutively expressed on bone marrow stromal cells, myeloid progenitors, splenic dendritic cells, activated endothelial cells, as well as some lymphocytes. CD106 expression can be upregulated on endothelial cells by inflammatory cytokines. CD106 is involved in adhesion and acts as a counter-receptor for VLA-4 ( $\alpha 4/\beta 1$  integrin) and LPAM-1 ( $\alpha 4/\beta 7$  integrin).

**For Research Use Only**