

CCR6 Polyclonal Antibody

catalog number: E-AB-13117

Note: Centrifuge before opening to ensure complete recovery of vial contents.

Description

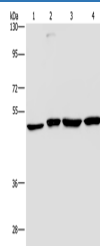
Reactivity	Human
Immunogen	Synthetic peptide of human CCR6
Host	Rabbit
Isotype	IgG
Purification	Affinity purification
Conjugation	Unconjugated
Buffer	Phosphate buffered solution, pH 7.4, containing 0.05% stabilizer and 50% glycerol.

Applications

Recommended Dilution

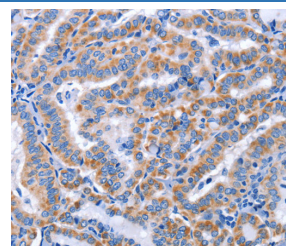
WB	1:1000-1:5000
IHC	1:50-1:200

Data



Western Blot analysis of A431, HepG2, Raji and K562 cell using CCR6 Polyclonal Antibody at dilution of 1:966

Calculated-MW:42 kDa



Immunohistochemistry of paraffin-embedded Human thyroid cancer using CCR6 Polyclonal Antibody at dilution of 1:50

Preparation & Storage

Storage	Store at -20°C Valid for 12 months. Avoid freeze / thaw cycles.
Shipping	The product is shipped with ice pack, upon receipt, store it immediately at the temperature recommended.

Background

This gene encodes a member of the beta chemokine receptor family, which is predicted to be a seven transmembrane protein similar to Gprotein-coupled receptors. The gene is preferentially expressed by immature dendritic cells and memory T cells. The ligand of this receptor is macrophage inflammatory protein 3 alpha (MIP-3 alpha). This receptor has been shown to be important for B-lineage maturation and antigen-driven B-cell differentiation, and it may regulate the migration and recruitment of dendritic and T cells during inflammatory and immunological responses. Alternatively spliced transcript variants that encode the same protein have been described for this gene.

For Research Use Only