

## Recombinant Human FGFR5/FGFRL1 Protein (His Tag)

Catalog Number: PKSH032427

**Note:** Centrifuge before opening to ensure complete recovery of vial contents.

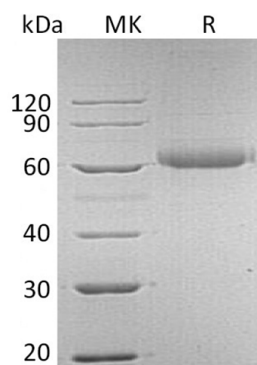
### Description

<b>Species</b>	Human
<b>Source</b>	HEK293 Cells-derived Human FGFR5;FGFRL1 protein Ala25-Pro378, with an C-terminal His
<b>Calculated MW</b>	39.9 kDa
<b>Observed MW</b>	65 kDa
<b>Accession</b>	Q8N441
<b>Bio-activity</b>	Not validated for activity

### Properties

<b>Purity</b>	> 95 % as determined by reducing SDS-PAGE.
<b>Endotoxin</b>	< 1.0 EU per µg of the protein as determined by the LAL method.
<b>Storage</b>	Generally, lyophilized proteins are stable for up to 12 months when stored at -20 to -80°C. Reconstituted protein solution can be stored at 4-8°C for 2-7 days. Aliquots of reconstituted samples are stable at < -20°C for 3 months.
<b>Shipping</b>	This product is provided as lyophilized powder which is shipped with ice packs.
<b>Formulation</b>	Lyophilized from a 0.2 µm filtered solution of 20mM Tris-HCl, 150mM NaCl, pH 8.0. Normally 5% - 8% trehalose, mannitol and 0.01% Tween 80 are added as protectants before lyophilization.
	Please refer to the specific buffer information in the printed manual.
<b>Reconstitution</b>	Please refer to the printed manual for detailed information.

### Data



> 95 % as determined by reducing SDS-PAGE.

### Background

Fibroblast Growth Factor Receptor-Like 1 (FGFRL1) is a single-pass type I membrane protein that belongs to the FGF receptor family. The mature human FGFRL1 consists of a 354 amino acid extracellular domain (ECD) with 3 Ig-like C2-type domains, a 21 amino acid transmembrane segment, and a 134 amino acid cytoplasmic domain. FGFR1 expressed in various tissues, preferentially in cartilaginous tissues and pancreas. It highly expressed in the liver, kidney, heart, brain and skeletal muscle, weakly expressed in the lung, small intestine and spleen. FGFRL1 has a negative effect on cell proliferation.

### For Research Use Only

Toll-free: 1-888-852-8623  
Web: [www.elabscience.com](http://www.elabscience.com)

Tel: 1-832-243-6086  
Email: [techsupport@elabscience.com](mailto:techsupport@elabscience.com)

Fax: 1-832-243-6017