

alpha Tubulin Polyclonal Antibody

catalog number: **E-AB-40510**

Note: Centrifuge before opening to ensure complete recovery of vial contents.

Description

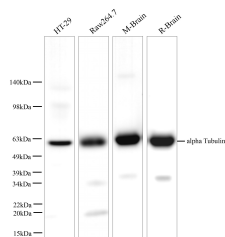
Reactivity	Mouse;Rat;Zebrafish
Immunogen	Synthetic peptide corresponding to human TUBA protein
Host	Rabbit
Isotype	IgG
Purification	Antigen Affinity Purification
Buffer	PBS with 0.05% Proclin300, 1% protective protein and 50% glycerol, pH7.4

Applications

Recommended Dilution

1:1000-1:2000

Data



Western blot with Anti alpha Tubulin Polyclonal Antibody at dilution of 1:1000. Lane 1:HT-29 cell lysate,Lane 2:Raw264.7 cell lysate, Lane 3:Mouse Brain tissue lysate,Lane 4:Rat Brain tissue lysate.

Observed-MW:55 kDa

Calculated-MW:55 kDa

Preparation & Storage

Storage	Store at -20°C Valid for 12 months . Avoid freeze / thaw cycles .
Shipping	The product is shipped with ice pack, upon receipt, store it immediately at the temperature recommended.

Background

Tubulin is a highly conserved $\alpha\beta$ dimeric protein present and is essential for all eukaryotes. $\alpha\beta$ -Tubulin dimers assemble into microtubules, dynamic polymers important in a variety of functions, most noticeably, mitosis. Tubulin assembly and disassembly are