

## PE/Cyanine7 Anti-Mouse Ly-6G/Ly-6C (Gr-1) Antibody[RB6-8C5]

**Catalog Number:** E-AB-F1120UH

**Note:** Centrifuge before opening to ensure complete recovery of vial contents.

### Description

<b>Reactivity</b>	Mouse
<b>Host</b>	Rat
<b>Isotype</b>	Rat IgG2b, $\kappa$
<b>Clone No.</b>	RB6-8C5
<b>Isotype Control</b>	PE/Cyanine7 Rat IgG2b, $\kappa$ Isotype Control[LTF-2] [Product E-AB-F09843H]
<b>Conjugation</b>	PE/Cyanine 7
<b>Conjugation Information</b>	PE/Cyanine7 is designed to be excited by the Blue (488 nm), Green (532 nm) and yellow-green (561 nm) lasers and detected using an optical filter centered near 775 nm (e.g., a 780/60 nm bandpass filter).
<b>Storage Buffer</b>	Phosphate buffered solution, pH 7.2, containing 0.09% stabilizer and 1% protein protectant.

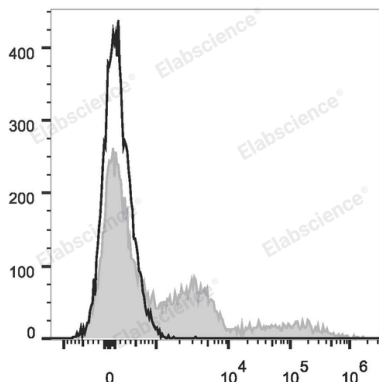
### Applications

### Recommended usage

#### FCM

Each lot of this antibody is quality control tested by flow cytometric analysis. Please check your vial before the experiment. Since applications vary, the appropriate dilutions must be determined for individual use. We suggest each investigator should titrate the reagent to obtain optimal results [The recommended concentration is 0.1-1  $\mu\text{g}/10^6$  cells in 100  $\mu\text{L}$  volume].

### Data



C57BL/6 murine bone marrow cells are stained with PE/Cyanine7 Anti-Mouse Ly-6G/Ly-6C (Gr-1) Antibody (filled gray histogram). Unstained bone marrow cells (empty black histogram) are used as control.

### Preparation & Storage

<b>Storage</b>	Keep as concentrated solution. This product can be stored at 2-8°C for 12 months. Please protected from prolonged exposure to light and do not freeze.
<b>Shipping</b>	Ice bag

### Antigen Information

<b>Alternate Names</b>	Gr-1;Gr1;Ly-6G/Ly-6C;Ly6G/Ly6C
<b>Uniprot ID</b>	P35461;P0CW03

### For Research Use Only

**Gene ID**

546644 ,17067

**Background**

Gr-1 is a 21-25 kD protein also known as Ly-6G/Ly-6C. This myeloid differentiation antigen is a glycosylphosphatidylinositol (GPI)-linked protein expressed on granulocytes and macrophages. In bone marrow, the expression levels of Gr-1 directly correlate with granulocyte differentiation and maturation; Gr-1 is also transiently expressed on bone marrow cells in the monocyte lineage. Immature Myeloid Gr-1+ cells play a role in the development of antitumor immunity.

**For Research Use Only**