

Phospho-IkB alpha (Ser32/S36) Polyclonal Antibody

catalog number: E-AB-20911

Note: Centrifuge before opening to ensure complete recovery of vial contents.

Description

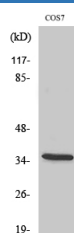
Reactivity	Human;Mouse;Rat;Monkey
Immunogen	Synthesized peptide derived from human IκB-α around the phosphorylation site of Ser32/36
Host	Rabbit
Isotype	IgG
Purification	Affinity purification
Conjugation	Unconjugated
buffer	Phosphate buffered solution, pH 7.4, containing 0.05% stabilizer, 0.5% protein protectant and 50% glycerol.

Applications

Recommended Dilution

WB	1:500-1:2000
IHC	1:100-1:300
IF	1:200-1:1000

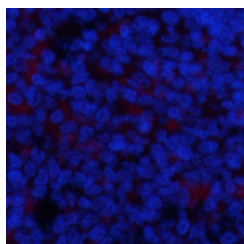
Data



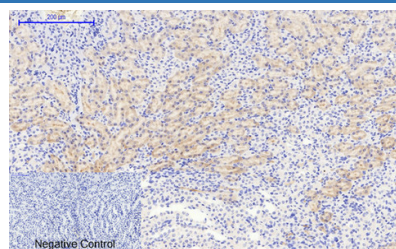
Western Blot analysis of COS-7 cells with Phospho-IkB alpha (Ser32/S36) Polyclonal Antibody

Observed-MV:34 kDa

Calculated-MV:36 kDa



Immunofluorescence analysis of Rat spleen tissue using Phospho-IkB alpha (Ser32/S36) Polyclonal Antibody at dilution of 1:200



Immunohistochemistry of paraffin-embedded Mouse kidney tissue using Phospho-IkB alpha (Ser32/S36) Polyclonal Antibody at dilution of 1:200

Preparation & Storage

Storage	Store at -20°C Valid for 12 months. Avoid freeze / thaw cycles.
Shipping	The product is shipped with ice pack, upon receipt, store it immediately at the temperature recommended.

Background

For Research Use Only

Phospho-IkB alpha (Ser32/S36) Polyclonal Antibody

catalog number: E-AB-20911



Inhibits the activity of dimeric NF-kappa-B/REL complexes by trapping REL dimers in the cytoplasm through masking of their nuclear localization signals. On cellular stimulation by immune and proinflammatory responses, becomes phosphorylated promoting ubiquitination and degradation, enabling the dimeric RELA to translocate to the nucleus and activate transcription.

For Research Use Only

A Reliable Research Partner in Life Science and Medicine
Tel: 400-999-2100

Email: techsupport@elabscience.cn

Web: www.elabscience.cn

Rev. V1.9