

MOB4 Polyclonal Antibody

Catalog Number: E-AB-18424



Note: Centrifuge before opening to ensure complete recovery of vial contents.

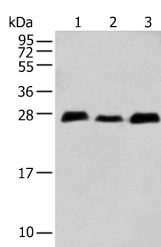
Description

Reactivity	Human, Mouse, Rat
Immunogen	Full length fusion protein
Host	Rabbit
Isotype	IgG
Purification	Antigen affinity purification
Conjugation	Unconjugated
Formulation	PBS with 0.05% NaN ₃ and 40% Glycerol, pH7.4

Applications Recommended Dilution

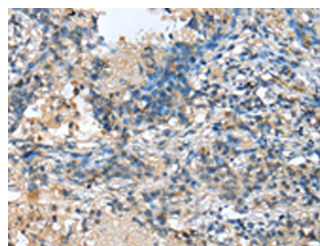
WB	1:500-1:2000
IHC	1:25-1:100
ELISA	1:5000-1:10000

Data

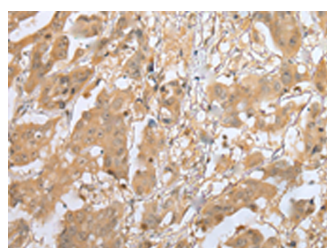


Western blot analysis of Human fetal brain tissue
Human cerebrum tissue Mouse brain tissue using
MOB4 Polyclonal Antibody at dilution of 1:400

Observed MW: Refer to figures
Calculated Mw: 26 kDa



Immunohistochemistry of paraffin-embedded
Human lung cancer tissue using MOB4 Polyclonal
Antibody at dilution of 1:25 (x200)



Immunohistochemistry of paraffin-embedded
Human breast cancer tissue using MOB4 Polyclonal
Antibody at dilution of 1:25 (x200)

Preparation & Storage

Storage Store at -20°C. Avoid freeze / thaw cycles.

Background

For Research Use Only

A Reliable Research Partner in Life Science and Medicine

Toll-free: 1-888-852-8623

Web: www.elabscience.com

Tel: 1-832-243-6086

Email: techsupport@elabscience.com

Fax: 1-832-243-6017

MOB4 Polyclonal Antibody

Catalog Number: E-AB-18424



This gene was identified based on its similarity with the mouse counterpart. Studies of the mouse counterpart suggest that the expression of this gene may be regulated during oocyte maturation and preimplantation following zygotic gene activation. Alternatively spliced transcript variants encoding distinct isoforms have been observed. Naturally occurring read-through transcription occurs between this locus and the neighboring locus HSPE1.

For Research Use Only

A Reliable Research Partner in Life Science and Medicine

Toll-free: 1-888-852-8623

Tel: 1-832-243-6086

Fax: 1-832-243-6017

Web: www.elabscience.com

Email: techsupport@elabscience.com