

## PE Anti-Mouse/Human CD11b Antibody[M1/70]

Catalog Number: E-AB-F1081D

**Note:** Centrifuge before opening to ensure complete recovery of vial contents.

### Description

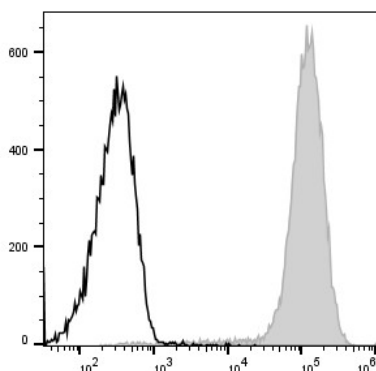
|                                |   |
|--------------------------------|---|
| <b>Reactivity</b>              | Human;Mouse   |
| <b>Host</b>                    | Rat   |
| <b>Isotype</b>                 | Rat IgG2b, κ  |
| <b>Clone No.</b>               | M1/70   |
| <b>Isotype Control</b>         | PE Rat IgG2b, κ Isotype Control[LTF-2] [Product E-AB-F09842D]   |
| <b>Conjugation</b>             | PE  |
| <b>Conjugation Information</b> | PE is designed to be excited by the Blue (488 nm), Green (532 nm) and Yellow-Green (561 nm) lasers and detected using an optical filter centered near 575 nm (e.g., a 585/42 nm bandpass filter). |
| <b>Storage Buffer</b>          | Phosphate buffered solution, pH 7.2, containing 0.09% stabilizer.   |

### Applications

### Recommended usage

|            |   |
|------------|---|
| <b>FCM</b> | Each lot of this antibody is quality control tested by flow cytometric analysis. <b>The amount of the reagent is suggested to be used 5 μL of antibody per test (million cells in 100 μL staining volume or per 100 μL of whole blood).</b> Please check your vial before the experiment. Since applications vary, the appropriate dilutions must be determined for individual use. |
|------------|---|

### Data



Staining of C57BL/6 murine bone marrow cells with PE Anti-Mouse/Human CD11b Antibody[M1/70] (filled gray histogram) or PE Rat IgG2b, κ Isotype Control (empty black histogram). Cells in the large scatter population were used for analysis.

### Preparation & Storage

|                 |   |
|-----------------|---|
| <b>Storage</b>  | Keep as concentrated solution.<br>This product can be stored at 2-8°C for 24 months. Please protected from prolonged exposure to light and do not freeze. |
| <b>Shipping</b> | Ice bag   |

### Antigen Information

|                        |  |
|------------------------|--|
| <b>Alternate Names</b> | CD11 antigen-like family member B;CD11b;CR-3 alpha chain;Integrin alpha-M;Itgam; Leukocyte adhesion receptor MO1 |
|------------------------|--|

### For Research Use Only

|                   |   |
|-------------------|---|
| <b>Uniprot ID</b> | P05555;P11215   |
| <b>Gene ID</b>    | 16409;3684  |
| <b>Background</b> | CD11b is a 170 kD glycoprotein also known as $\alpha$ M integrin, Mac-1 $\alpha$ subunit, Mol, CR3, and Ly-40. CD11b is a member of the integrin family, primarily expressed on granulocytes, monocytes/macrophages, dendritic cells, NK cells, and subsets of T and B cells. CD11b non-covalently associates with CD18 ( $\beta$ 2 integrin) to form Mac-1. Mac-1 plays an important role in cell-cell interaction by binding its ligands ICAM-1 (CD54), ICAM-2 (CD102), ICAM-4 (CD242), iC3b, and fibrinogen. |