

Recombinant FRS2 Monoclonal Antibody

catalog number: **AN301184L**

Note: Centrifuge before opening to ensure complete recovery of vial contents.

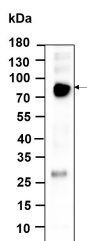
Description

Reactivity	Human;Mouse;Rat
Immunogen	Recombinant Human FRS2 protein
Host	Rabbit
Isotype	IgG, κ
Clone	B943
Purification	Protein A
Buffer	PBS, 50% glycerol, 0.05% Proclin 300, 0.05% protein protectant.

Applications

Applications	Recommended Dilution
WB	1:2000-1:10000
IF	1:200-1:1000
ELISA	1:5000-1:20000
IP	1:50-1:200

Data



Western Blot with Recombinant FRS2 Monoclonal Antibody
at dilution of 1:1000 dilution. Lane A: SH-SY5Y lysate.

Observed-MW:80 kDa

Calculated-MW:57 kDa

Preparation & Storage

Storage	Store at -20°C Valid for 12 months. Avoid freeze / thaw cycles.
Shipping	Ice bag

Background

Adapter protein that links FGR and NGF receptors to downstream signaling pathways. Involved in the activation of MAP kinases. Modulates signaling via SHC1 by competing for a common binding site on NTRK1.,PTM: Phosphorylated on tyrosine residues upon stimulation by NGF.,PTM:Ubiquitinated when tyrosine phosphorylated and in a complex with GRB2. The unphosphorylated form is not subject to ubiquitination.,sequence caution:Translated as stop.,similarity:Contains 1 IRS-type PTB domain.,subcellular location:Cytoplasmic, membrane-bound.,subunit:Part of a complex containing FRS2, GRB2 and SOS1. Part of a complex containing GRB2 and CBL. Binds RET (By similarity). Binds FGFR1, SUC1, NTRK1, NTRK2, NTRK3 and SRC. The tyrosine-phosphorylated protein binds the SH2 domains of GRB2 and PTPN11.,tissue specificity:Highly expressed in heart, brain, spleen, lung, liver, skeletal muscle, kidney and testis.

For Research Use Only

Toll-free: 1-888-852-8623
Web: www.elabscience.com

Tel: 1-832-243-6086
Email: techsupport@elabscience.com

Fax: 1-832-243-6017

Rev. V1.2