

Purified Anti-Mouse TCR V beta8.1/2 Antibody[KJ16-133.18]

Catalog Number: GF004820P

Note: Centrifuge before opening to ensure complete recovery of vial contents.

Description

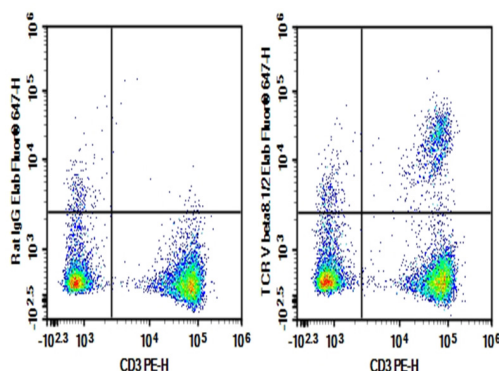
Reactivity	Mouse
Immunogen	Recombinant Mouse TCR V beta8.1/2 protein
Host	Rat
Isotype	Rat IgG2a, κ
Clone	KJ16-133.18
Purification	>98%, Protein A/G purified
Conjugation	Unconjugated
Buffer	Phosphate-buffered solution, pH 7.2, containing 0.05% non-protein stabilizer. Dialyze to completely remove the stabilizer prior to labeling.

Applications

Recommended Dilution

FCM	2 µg/mL (0.5×10 ⁶ -1×10 ⁶ cells)
-----	--

Data



C57/BL6 Mouse splenocytes were stained with 0.2 µg Purified Anti-Mouse TCR V beta8.1/2 Antibody[KJ16-133.18] (Right) and 0.2 µg Rat Ig2a, κ Isotype Control (Left), followed by Elab Fluor® 647-conjugated Goat Anti-Rat IgG Secondary Antibody, then anti-Mouse CD3 PE-conjugated Monoclonal Antibody.

Preparation & Storage

Storage	Store at 4°C valid for 12 months or -20°C valid for long term storage, avoid freeze / thaw cycles.
Shipping	Ice bag

Background

The ability of T cell receptors (TCR) to discriminate foreign from self-peptides presented by major histocompatibility complex (MHC) class II molecules is essential for an effective adaptive immune response. TCR recognition of self-peptides has been linked to autoimmune disease. Mutant self-peptides have been associated with tumors. Engagement of TCRs by a family of bacterial toxins known as superantigens has been responsible for toxic shock syndrome. Autoantibodies to V beta segments of T cell receptors have been isolated from patients with rheumatoid arthritis (RA) and systemic lupus erythematosus (SLE). The autoantibodies block TH1-mediated inflammatory autodestructive reactions and are believed to be a method by which the immune system compensates for disease. Most human T cells express the TCR alpha-beta and either CD4 or CD8 molecule (single positive, SP). A small number of T cells lack both CD4 and CD8 (double negative, DN). Increased percentages of alpha-beta DN T cells have been identified in some autoimmune and immunodeficiency disorders. Gamma-delta T cells are primarily found within the epithelium. They show less TCR diversity and recognize antigens differently than alpha-beta T cells. Subsets of gamma-delta T cells have shown antitumor and immunoregulatory activity.