

Lbp Polyclonal Antibody

catalog number: D-AB-10445L

Note: Centrifuge before opening to ensure complete recovery of vial contents.

Description

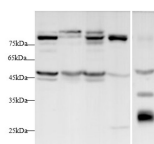
Reactivity	Human;Mouse;Rat
Immunogen	Recombinant Human Lbp protein expressed by Mammalian
Host	Rabbit
Isotype	IgG
Purification	Antigen Affinity Purification
Conjugation	Unconjugated
buffer	PBS with 0.05% proclin 300, 1% protective protein and 50% glycerol,pH7.4

Applications

Recommended Dilution

WB	1:500-1:1000
-----------	--------------

Data



Western blot with Lbp Polyclonal antibody at dilution of 1:1000.lane 1:A431 whole cell lysate,lane 2:HEK-293T whole cell lysate,lane 3:HepG2 whole cell lysate,lane 4:Mouse liver,lane 5:Rat serum

Observed-MV:55 kDa

Calculated-MV:54 kDa

Preparation & Storage

Storage	Store at -20°C Valid for 12 months. Avoid freeze / thaw cycles.
Shipping	The product is shipped with ice pack,upon receipt,store it immediately at the temperature recommended.

Background

Lipopolysaccharide-binding protein(LBP),a 58kDa glycoprotein synthesized in hepatocytes,belongs to a family of lipid-binding proteins that includes bactericidal/permeability increasing protein(BPI),phospholipid ester transfer protein(PLT P),and cholesterol ester transfer protein(CETP). LBP binds to the lipidA portion of lipopolysaccharide(LPS) to facilitate the process of LPS monomerization,catalyzes the binding of LPS monomers to CD14,and promotes LPS-induced immune response.

For Research Use Only