

## Recombinant Vinculin Monoclonal Antibody

catalog number: **E-AB-81494**

**Note:** Centrifuge before opening to ensure complete recovery of vial contents.

### Description

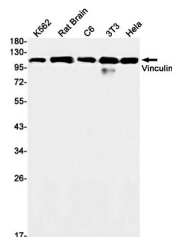
<b>Reactivity</b>	Human;Mouse;Rat
<b>Immunogen</b>	A synthetic peptide of human Vinculin
<b>Host</b>	Rabbit
<b>Isotype</b>	IgG
<b>Clone</b>	R04-8F9
<b>Purification</b>	Affinity Purified
<b>Buffer</b>	50mM Tris-Glycine(pH 7.4), 0.15M NaCl, 40% Glycerol, 0.05% stabilizer and 0.05% protective protein.

### Applications

### Recommended Dilution

<b>WB</b>	1:1000-1:2000
<b>IF</b>	1:50-1:100

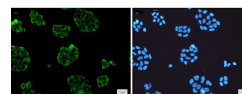
### Data



Western blot detection of Vinculin in K562,Rat Brain,C6,3T3,Hela cell lysates using Vinculin Rabbit mAb(1:1000 diluted).Predicted band size:124kDa.Observed band size:124kDa.

**Observed-MW:124 kDa**

**Calculated-MW:124 kDa**



Immunofluorescence of Vinculin(green) in Hela cells using Vinculin Rabbit mAb at dilution 1:50, and DAPI(blue)

### Preparation & Storage

<b>Storage</b>	Store at -20°C Valid for 12 months. Avoid freeze / thaw cycles.
<b>Shipping</b>	The product is shipped with ice pack,upon receipt,store it immediately at the temperature recommended.

### Background

Vinculin belongs to the vinculin/alpha-catenin family. It is an actin filament (F-actin)-binding protein which involved in cell-matrix adhesion and cell-cell adhesion. Vinculin is a cytoskeletal protein associated with cell-cell and cell-matrix junctions. Vinculin regulates cell-surface E-cadherin expression and potentiates mechanosensing by the E-cadherin complex. It plays an important role in cell morphology and locomotion.

### For Research Use Only