

# p70 S6 kinase alpha Monoclonal Antibody

catalog number: E-AB-22198

**Note:** Centrifuge before opening to ensure complete recovery of vial contents.

## Description

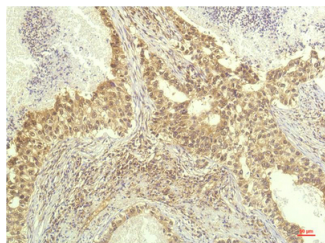
<b>Reactivity</b>	Human;Mouse;Rat
<b>Immunogen</b>	Recombinant Protein of P70 S6 Kinase of RPS6KB1
<b>Host</b>	Mouse
<b>Isotype</b>	IgG
<b>Clone</b>	1C7
<b>Purification</b>	Protein A purification
<b>Conjugation</b>	Unconjugated
<b>buffer</b>	Phosphate buffered solution, pH 7.4, containing 0.05% stabilizer, 0.5% protein protectant and 50% glycerol.

## Applications

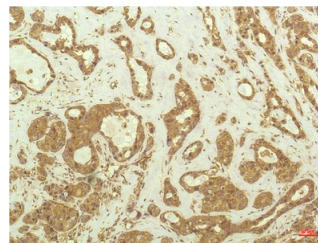
## Recommended Dilution

<b>IHC</b>	1:100-200
------------	-----------

## Data



Immunohistochemistry of paraffin-embedded Human lung carcinoma tissue using p70 S6 kinase alpha Monoclonal Antibody at dilution of 1:200.



Immunohistochemistry of paraffin-embedded Human breast carcinoma tissue using p70 S6 kinase alpha Monoclonal Antibody at dilution of 1:200.

## Preparation & Storage

<b>Storage</b>	Store at -20°C Valid for 12 months. Avoid freeze / thaw cycles.
<b>Shipping</b>	The product is shipped with ice pack, upon receipt, store it immediately at the temperature recommended.

## Background

P70 S6 Kinase alpha is a member of the RSK (ribosomal S6 kinase) family of serine/threonine kinases and contains 2 non-identical kinase catalytic domains. It phosphorylates several residues of the S6 ribosomal protein. The kinase activity of this protein is activated by serine/threonine phosphorylation and protein kinase C and inactivated by type 2A phosphatase. Activation leads to an increase in protein synthesis and cell proliferation. Overexpression of this kinase is involved in some breast cancer cell lines. Alternate translational start sites have been described and alternate transcriptional splice variants have been observed but have not been thoroughly characterized.

## For Research Use Only