

Recombinant Human Lysozyme C/LYZ Protein (His Tag)



Catalog Number:PKSH032722

Note: Centrifuge before opening to ensure complete recovery of vial contents.

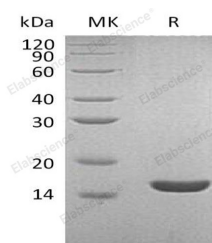
Description

| | |
|------------------------------------|--|
| Synonyms | Lysozyme C;1,4-beta-N-acetylmuramidase C;LYZ;LZM |
| Species | Human |
| Expression Host | HEK293 Cells |
| Sequence | Lys19-Val148 |
| Accession | P61626 |
| Calculated Molecular Weight | 15.7 kDa |
| Observed molecular weight | 15 kDa |
| Tag | C-His |

Properties

| | |
|-----------------------|--|
| Purity | > 95 % as determined by reducing SDS-PAGE. |
| Endotoxin | < 1.0 EU per µg of the protein as determined by the LAL method. |
| Storage | Store at < -20°C, stable for 6 months. Please minimize freeze-thaw cycles. |
| Shipping | This product is provided as liquid. It is shipped at frozen temperature with blue ice/gel packs. Upon receipt, store it immediately at < - 20°C. |
| Formulation | Supplied as a 0.2 µm filtered solution of 20mM Tris-HCl, 150mM NaCl, 10% Glycerol, pH 7.5. |
| Reconstitution | Not Applicable |

Data



> 95 % as determined by reducing SDS-PAGE.

Background

Lysozyme C is a secreted protein and belongs to the glycosyl hydrolase 22 family. Lysozymes have primarily a bacteriolytic function, damage bacterial cell walls by catalyzing hydrolysis of 1,4-beta-linkages between N-acetylmuramic acid and N-acetyl-D-glucosamine residues in a peptidoglycan and between N-acetyl-D-glucosamine residues in chitodextrins. Those in tissues and body fluids are associated with the monocyte-macrophage system and enhance the activity of immunoagents. Lysozyme C is capable of both hydrolysis and transglycosylation; it shows also a slight esterase activity. It acts rapidly on both peptide-substituted and unsubstituted peptidoglycan, and slowly on chitin oligosaccharides.

For Research Use Only

A Reliable Research Partner in Life Science and Medicine

Toll-free: 1-888-852-8623

Web: www.elabscience.com

Tel: 1-832-243-6086

Email: techsupport@elabscience.com

Fax: 1-832-243-6017