

SLC6A7 Polyclonal Antibody

Catalog Number:E-AB-16846

Note: Centrifuge before opening to ensure complete recovery of vial contents.

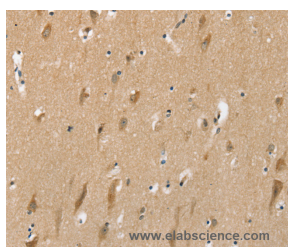
Description

Reactivity	Human,Rat
Immunogen	Synthetic peptide of human SLC6A7
Host	Rabbit
Isotype	IgG
Purification	Affinity purification
Conjugation	Unconjugated
Formulation	PBS with 0.05% sodium azide and 50% glycerol, PH7.4

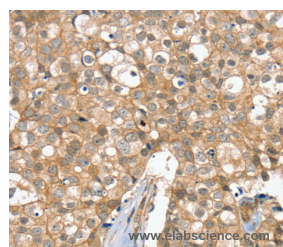
Applications Recommended Dilution

IHC	1:25-1:100
------------	------------

Data



Immunohistochemistry of paraffin-embedded Human brain tissue using SLC6A7 Polyclonal Antibody at dilution 1:30



Immunohistochemistry of paraffin-embedded Human breast cancer tissue using SLC6A7 Polyclonal Antibody at dilution 1:30

Preparation & Storage

Storage	Store at -20°C. Avoid freeze / thaw cycles.
----------------	---

Background

This gene is a member of the gamma-aminobutyric acid (GABA) neurotransmitter gene family and encodes a high-affinity mammalian brain L-proline transporter protein. This transporter protein differs from other sodium-dependent plasma membrane carriers by its pharmacological specificity, kinetic properties, and ionic requirements.

For Research Use Only

A Reliable Research Partner in Life Science and Medicine

Toll-free: 1-888-852-8623

Web: www.elabscience.com

Tel: 1-832-243-6086

Email: techsupport@elabscience.com

Fax: 1-832-243-6017