

KCNJ8 Polyclonal Antibody

Catalog Number: E-AB-90208



Note: Centrifuge before opening to ensure complete recovery of vial contents.

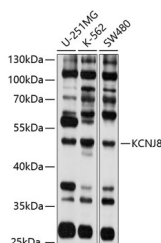
Description

Reactivity	Human
Immunogen	Recombinant fusion protein of human KCNJ8
Host	Rabbit
Isotype	IgG
Purification	Affinity purification
Conjugation	Unconjugated
Formulation	PBS with 0.02% sodium azide, 50% glycerol, pH7.3.

Applications Recommended Dilution

WB	1:1000-1:2000
-----------	---------------

Data



Western blot analysis of extracts of various cell lines using KCNJ8 Polyclonal Antibody at 1:1000 dilution.

Observed Mw:48kDa
Calculated Mw:47kDa

Preparation & Storage

Storage Store at -20°C. Avoid freeze/thaw cycles.

Background

Potassium channels are present in most mammalian cells, where they participate in a wide range of physiologic responses. The protein encoded by this gene is an integral membrane protein and inward-rectifier type potassium channel. The encoded protein, which has a greater tendency to allow potassium to flow into a cell rather than out of a cell, is controlled by G-proteins. Defects in this gene may be a cause of J-wave syndromes and sudden infant death syndrome (SIDS).

For Research Use Only

A Reliable Research Partner in Life Science and Medicine

Toll-free: 1-888-852-8623

Web: www.elabscience.com

Tel: 1-832-243-6086

Email: techsupport@elabscience.com

Fax: 1-832-243-6017