

## Recombinant KLK3/Kallikrein 3 Monoclonal Antibody

**catalog number: AN300053P**

**Note:** Centrifuge before opening to ensure complete recovery of vial contents.

### Description

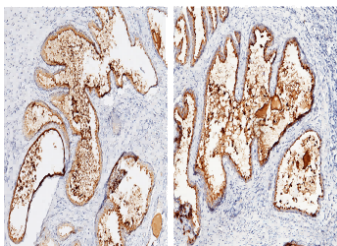
<b>Reactivity</b>	Human
<b>Immunogen</b>	Recombinant Human KLK3 / Kallikrein 3 protein
<b>Host</b>	Rabbit
<b>Isotype</b>	IgG
<b>Clone</b>	2C9
<b>Purification</b>	Protein A
<b>Buffer</b>	0.2 µm filtered solution in PBS

### Applications

### Recommended Dilution

<b>IHC-P</b>	1:100-1:500
--------------	-------------

### Data



Immunohistochemistry of paraffin-embedded human prostate using KLK3 / Kallikrein 3 Monoclonal Antibody at dilution of 1:200.

### Preparation & Storage

<b>Storage</b>	This antibody can be stored at 2°C-8°C for one month without detectable loss of activity. Antibody products are stable for twelve months from date of receipt when stored at -20°C to -80°C. Preservative-Free. Avoid repeated freeze-thaw cycles.
<b>Shipping</b>	Ice bag

### Background

Kallikreins are a subgroup of serine proteases having diverse physiological functions. Growing evidence suggests that many kallikreins are implicated in carcinogenesis and some have potential as novel cancer and other disease biomarkers. This gene is one of the fifteen kallikrein subfamily members located in a cluster on chromosome 19. Its protein product is a protease present in seminal plasma. It is thought to function normally in the liquefaction of seminal coagulum, presuMonoclonally by hydrolysis of the high molecular mass seminal vesicle protein. Serum level of this protein, called PSA in the clinical setting, is useful in the diagnosis and monitoring of prostatic carcinoma. Alternate splicing of this gene generates several transcript variants encoding different isoforms.

### For Research Use Only