

LILRB5 Polyclonal Antibody

catalog number: E-AB-19513

Note: Centrifuge before opening to ensure complete recovery of vial contents.

Description

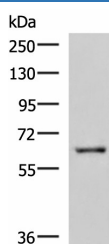
| | |
|--------------|--|
| Reactivity | Human |
| Immunogen | Synthetic peptide of human LILRB5 |
| Host | Rabbit |
| Isotype | IgG |
| Purification | Antigen affinity purification |
| Conjugation | Unconjugated |
| Buffer | Phosphate buffered solution, pH 7.4, containing 0.05% stabilizer and 50% glycerol. |

Applications

Recommended Dilution

| | |
|-----|--------------|
| WB | 1:500-1:2000 |
| IHC | 1:10-1:50 |

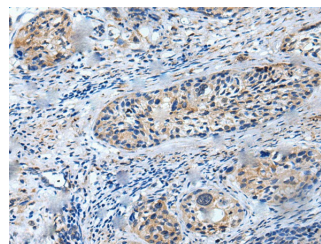
Data



Western blot analysis of HepG2 cell lysate using LILRB5 Polyclonal Antibody at dilution of 1:600

Observed-MW: Refer to figures

Calculated-MW: 64 kDa



Immunohistochemistry of paraffin-embedded Human cervical cancer tissue using LILRB5 Polyclonal Antibody at dilution of 1:25 (x200)

Preparation & Storage

| | |
|----------|--|
| Storage | Store at -20°C Valid for 12 months. Avoid freeze / thaw cycles. |
| Shipping | The product is shipped with ice pack, upon receipt, store it immediately at the temperature recommended. |

Background

This gene is a member of the leukocyte immunoglobulin-like receptor (LIR) family, which is found in a gene cluster at chromosomal region 19q13.4. The encoded protein belongs to the subfamily B class of LIR receptors which contain two or four extracellular immunoglobulin domains, a transmembrane domain, and two to four cytoplasmic immunoreceptor tyrosine-based inhibitory motifs (ITIMs). Several other LIR subfamily B receptors are expressed on immune cells where they bind to MHC class I molecules on antigen-presenting cells and inhibit stimulation of an immune response. Multiple transcript variants encoding different isoforms have been found for this gene.

For Research Use Only