

## Recombinant Human IL12RB1 Protein (Fc Tag)

**Catalog Number:** PKSH033356

**Note:** Centrifuge before opening to ensure complete recovery of vial contents.

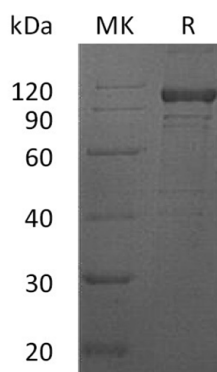
### Description

<b>Species</b>	Human
<b>Source</b>	HEK293 Cells-derived Human IL12RB1 protein Cys24-Glu540, with an C-terminal Fc
<b>Calculated MW</b>	84.2 kDa
<b>Observed MW</b>	95-110 kDa
<b>Accession</b>	P42701
<b>Bio-activity</b>	Not validated for activity

### Properties

<b>Purity</b>	> 90 % as determined by reducing SDS-PAGE.
<b>Endotoxin</b>	< 1.0 EU per µg of the protein as determined by the LAL method.
<b>Storage</b>	Generally, lyophilized proteins are stable for up to 12 months when stored at -20 to -80 °C. Reconstituted protein solution can be stored at 4-8°C for 2-7 days. Aliquots of reconstituted samples are stable at < -20°C for 3 months.
<b>Shipping</b>	This product is provided as lyophilized powder which is shipped with ice packs.
<b>Formulation</b>	Lyophilized from a 0.2 µm filtered solution of 20mM Tris-HCl, 5% trehalose, 5% mannitol, 0.02% Tween 80, pH8.0. Normally 5% - 8% trehalose, mannitol and 0.01% Tween 80 are added as protectants before lyophilization. Please refer to the specific buffer information in the printed manual.
<b>Reconstitution</b>	Please refer to the printed manual for detailed information.

### Data



> 90 % as determined by reducing SDS-PAGE.

### Background

Interleukin 12 receptor subunit beta 1 (IL12RB1) is a type I transmembrane protein that belongs to the hemopoietin receptor superfamily. IL12RB1 can spontaneously form homodimers and -oligomers; which are able to bind IL12 with only low affinity. IL12 high affinity receptor complex is composed of two subunits designated IL12RB1 and IL12RB2. While IL12RB1 interacts with the IL-12p40 subunit; IL-12p35 is mainly connecting with IL12RB2. This receptor chain is also responsible for transmitting the IL12 signal into the cell. IL12RB1; to the contrary; is also part of the IL23R; where it interacts with the p40 subunit of IL23. IL12RB1 is expressed in activated T cells; NK cells and B cells.

### For Research Use Only