

## BST2 Monoclonal Antibody

**catalog number:** AN200079P

**Note:** Centrifuge before opening to ensure complete recovery of vial contents.

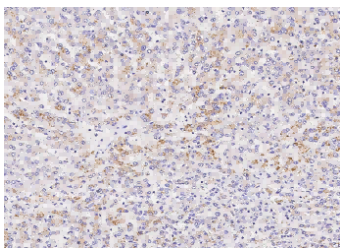
### Description

|                     |                                 |
|---------------------|---------------------------------|
| <b>Reactivity</b>   | Human                           |
| <b>Immunogen</b>    | Recombinant Human BST2 Protein  |
| <b>Host</b>         | Mouse                           |
| <b>Isotype</b>      | IgG1                            |
| <b>Clone</b>        | 2D6                             |
| <b>Purification</b> | Protein A                       |
| <b>Buffer</b>       | 0.2 µm filtered solution in PBS |

### Applications Recommended Dilution

|              |            |
|--------------|------------|
| <b>IHC-P</b> | 1:50-1:200 |
|--------------|------------|

### Data



Immunohistochemistry of paraffin-embedded human liver  
using BST2 Monoclonal Antibody at dilution of 1:60.

### Preparation & Storage

|                 |  |
|-----------------|--|
| <b>Storage</b>  | This antibody can be stored at 2°C-8°C for one month without detectable loss of activity. Antibody products are stable for twelve months from date of receipt when stored at -20°C to -80°C. Preservative-Free. Avoid repeated freeze-thaw cycles. |
| <b>Shipping</b> | Ice bag  |

### Background

Bone marrow stromal cells are involved in the growth and development of B-cells. The specific function of the protein encoded by the bone marrow stromal cell antigen 1 is undetermined; however, this protein may play a role in pre-B-cell growth and in rheumatoid arthritis.

### For Research Use Only