

Recombinant Bcr Monoclonal Antibody

catalog number: E-AB-81535

Note: Centrifuge before opening to ensure complete recovery of vial contents.

Description

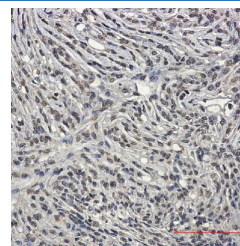
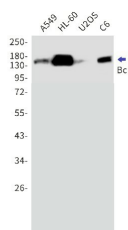
Reactivity	Human
Immunogen	A synthetic peptide of human Bcr
Host	Rabbit
Isotype	IgG
Clone	R02-610
Purification	Affinity Purified
Buffer	50mM Tris-Glycine(pH 7.4), 0.15M NaCl, 40% Glycerol, 0.05% stabilizer and 0.05% protective protein.

Applications

Recommended Dilution

WB	1:1000-1:2000
IHC	1:50-1:100

Data



Western blot detection of Bcr in A549,HL-60,U2OS,C6 cell lysates using Bcr Rabbit mAb(1:1000 diluted).Predicted band size:143kDa.Observed band size:160kDa.

Immunohistochemistry of Bcr in paraffin-embedded Human Brain using Bcr Rabbit mAb at dilution 1:50

Observed-MW:160 kDa

Calculated-MW:143 kDa

Preparation & Storage

Storage	Store at -20°C Valid for 12 months. Avoid freeze / thaw cycles.
Shipping	The product is shipped with ice pack,upon receipt,store it immediately at the temperature recommended.

Background

A reciprocal translocation between chromosomes 22 and 9 produces the Philadelphia chromosome, which is often found in patients with chronic myelogenous leukemia. The chromosome 22 breakpoint for this translocation is located within the BCR gene. The translocation produces a fusion protein which is encoded by sequence from both BCR and ABL, the gene at the chromosome 9 breakpoint. Although the BCR-ABL fusion protein has been extensively studied, the function of the normal BCR gene product is not clear. The protein has serine/threonine kinase activity and is a GTPase-activating protein for p21rac. Two transcript variants encoding different isoforms have been found for this gene.

For Research Use Only