

## IPPK Polyclonal Antibody

catalog number: **E-AB-18125**

**Note:** Centrifuge before opening to ensure complete recovery of vial contents.

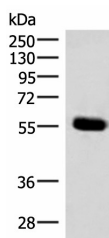
### Description

<b>Reactivity</b>	Human;Mouse;Rat
<b>Immunogen</b>	Synthetic peptide of human IPPK
<b>Host</b>	Rabbit
<b>Isotype</b>	IgG
<b>Purification</b>	Antigen affinity purification
<b>Buffer</b>	Phosphate buffered solution, pH 7.4, containing 0.05% stabilizer and 50% glycerol.

### Applications

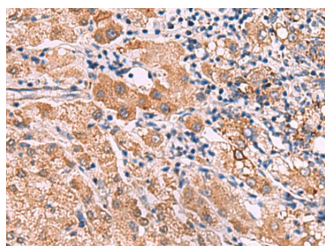
Applications	Recommended Dilution
<b>WB</b>	1:500-1:2000
<b>IHC</b>	1:30-1:150

### Data

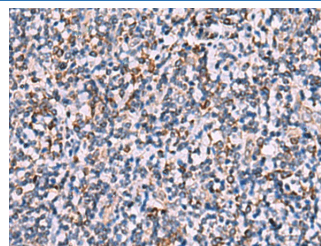


Western blot analysis of Mouse pancreas tissue lysate using IPPK Polyclonal Antibody at dilution of 1:350

**Observed-MV: Refer to figures**  
**Calculated-MV: 56 kDa**



Immunohistochemistry of paraffin-embedded Human liver cancer tissue using IPPK Polyclonal Antibody at dilution of 1:30 (x200)



Immunohistochemistry of paraffin-embedded Human tonsil tissue using IPPK Polyclonal Antibody at dilution of 1:30 (x200)

### Preparation & Storage

<b>Storage</b>	Store at -20°C Valid for 12 months. Avoid freeze / thaw cycles.
<b>Shipping</b>	The product is shipped with ice pack, upon receipt, store it immediately at the temperature recommended.

### Background

The protein encoded by this gene is a kinase that phosphorylates position 2 of inositol-1,3,4,5,6-pentakisphosphate to form inositol-1,2,3,4,5,6-hexakisphosphate (InsP6). InsP6 has a variety of functions, including stimulation of DNA repair, endocytosis, and mRNA export.

### For Research Use Only