

## HSPA6 Polyclonal Antibody

**catalog number: E-AB-62099**

**Note:** Centrifuge before opening to ensure complete recovery of vial contents.

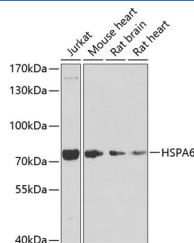
### Description

<b>Reactivity</b>	Human;Mouse;Rat
<b>Immunogen</b>	Recombinant fusion protein of human HSPA6 (NP_002146.2).
<b>Host</b>	Rabbit
<b>Isotype</b>	IgG
<b>Purification</b>	Affinity purification
<b>Buffer</b>	Phosphate buffered solution, pH 7.4, containing 0.05% stabilizer and 50% glycerol.

### Applications

Applications	Recommended Dilution
<b>WB</b>	1:500-1:2000
<b>IHC</b>	1:50-1:200

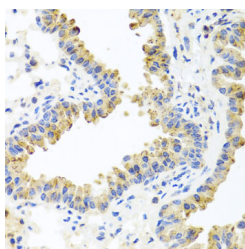
### Data



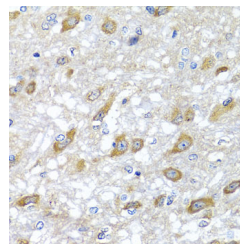
Western blot analysis of extracts of various cell lines using HSPA6 Polyclonal Antibody at dilution of 1:1000.

**Observed-MW:71 kDa**

**Calculated-MW:71 kDa**



Immunohistochemistry of paraffin-embedded Mouse lung using HSPA6 Polyclonal Antibody at dilution of 1:100 (40x lens).



Immunohistochemistry of paraffin-embedded Rat brain using HSPA6 Polyclonal Antibody at dilution of 1:100 (40x lens).

### Preparation & Storage

<b>Storage</b>	Store at -20°C Valid for 12 months. Avoid freeze / thaw cycles.
<b>Shipping</b>	The product is shipped with ice pack, upon receipt, store it immediately at the temperature recommended.

### Background

### For Research Use Only

HSPA6 (Heat Shock Protein Family A (Hsp70) Member 6) is a Protein Coding gene. Diseases associated with HSPA6 include Hepatocellular Carcinoma. Among its related pathways are Cellular response to heat stress and Mechanisms of CFTR activation by S-nitrosoglutathione (normal and CF). Gene Ontology (GO) annotations related to this gene include enzyme binding and heat shock protein binding. An important paralog of this gene is HSPA1A.