

HEBP1 Polyclonal Antibody

catalog number: E-AB-19977

Note: Centrifuge before opening to ensure complete recovery of vial contents.

Description

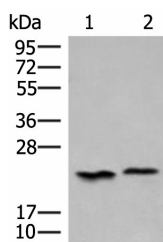
| | |
|---------------------|--|
| Reactivity | Human |
| Immunogen | Synthetic peptide of human HEBP1 |
| Host | Rabbit |
| Isotype | IgG |
| Purification | Antigen affinity purification |
| Conjugation | Unconjugated |
| Buffer | Phosphate buffered solution, pH 7.4, containing 0.05% stabilizer and 50% glycerol. |

Applications

Recommended Dilution

| | |
|------------|--------------|
| WB | 1:500-1:2000 |
| IHC | 1:40-1:200 |

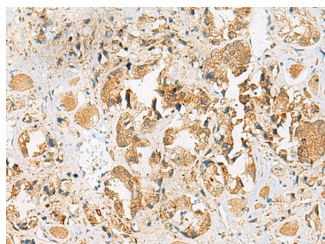
Data



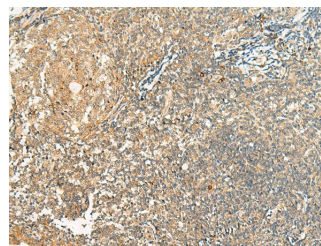
Western blot analysis of 293T cell lysates using HEBP1 Polyclonal Antibody at dilution of 1:450

Observed-MW:Refer to figures

Calculated-MW:21 kDa



Immunohistochemistry of paraffin-embedded Human prostate cancer tissue using HEBP1 Polyclonal Antibody at dilution of 1:40(×200)



Immunohistochemistry of paraffin-embedded Human tonsil tissue using HEBP1 Polyclonal Antibody at dilution of 1:40(×200)

Preparation & Storage

| | |
|-----------------|--|
| Storage | Store at -20°C Valid for 12 months. Avoid freeze / thaw cycles. |
| Shipping | The product is shipped with ice pack, upon receipt, store it immediately at the temperature recommended. |

Background

The full-length protein encoded by this gene is an intracellular tetrapyrrole-binding protein. This protein includes a natural chemoattractant peptide of 21 amino acids at the N-terminus, which is a natural ligand for formyl peptide receptor-like receptor 2 (FPR2) and promotes calcium mobilization and chemotaxis in monocytes and dendritic cells.

For Research Use Only