

SLC8A2 Polyclonal Antibody

Catalog Number:E-AB-91260



Note: Centrifuge before opening to ensure complete recovery of vial contents.

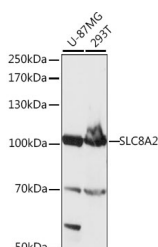
Description

Reactivity	Human
Immunogen	Recombinant fusion protein of human SLC8A2
Host	Rabbit
Isotype	IgG
Purification	Affinity purification
Conjugation	Unconjugated
Formulation	PBS with 0.01% thiomersal, 50% glycerol, pH 7.3.

Applications Recommended Dilution

WB	1:500-1:2000
-----------	--------------

Data



Western blot analysis of extracts of various cell lines using SLC8A2 Polyclonal Antibody at 1:1000 dilution.

Observed Mw:100kDa

Calculated Mw:100kDa

Preparation & Storage

Storage Store at -20°C. Avoid freeze/thaw cycles.

Background

Mediates the electrogenic exchange of Ca^{2+} against Na^{+} ions across the cell membrane, and thereby contributes to the regulation of cytoplasmic Ca^{2+} levels and Ca^{2+} -dependent cellular processes. Contributes to cellular Ca^{2+} homeostasis in excitable cells. Contributes to the rapid decrease of cytoplasmic Ca^{2+} levels back to baseline after neuronal activation, and thereby contributes to modulate synaptic plasticity, learning and memory. Plays a role in regulating urinary Ca^{2+} and Na^{+} excretion.

For Research Use Only

A Reliable Research Partner in Life Science and Medicine

Toll-free: 1-888-852-8623

Web: www.elabscience.com

Tel: 1-832-243-6086

Email: techsupport@elabscience.com

Fax: 1-832-243-6017