

## PE Anti-Mouse CD20 Antibody[SA271G2]

Catalog Number: E-AB-F1403D

Note: Centrifuge before opening to ensure complete recovery of vial contents.

### Description

Reactivity	Mouse
Host	Rat
Isotype	Rat IgG2b, $\kappa$
Clone No.	SA271G2
Isotype Control	PE Rat IgG2b, $\kappa$ Isotype Control[LTF-2] [Product E-AB-F09842D]
Conjugation	PE
Conjugation Information	PE is designed to be excited by the Blue (488 nm), Green (532 nm) and Yellow-Green (561 nm) lasers and detected using an optical filter centered near 575 nm (e.g., a 585/42 nm bandpass filter).
Storage Buffer	Phosphate buffered solution, pH 7.2, containing 0.09% sodium azide and 1% BSA.

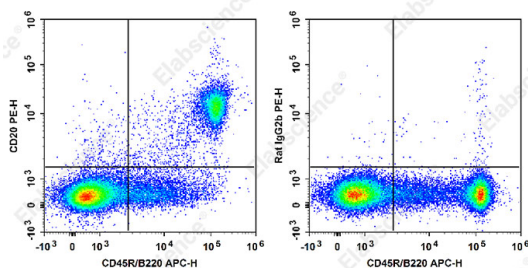
### Applications

### Recommended usage

FCM

Each lot of this antibody is quality control tested by flow cytometric analysis. **The amount of the reagent is suggested to be used 5  $\mu$ L of antibody per test (million cells in 100  $\mu$ L staining volume or per 100  $\mu$ L of whole blood).** Please check your vial before the experiment. Since applications vary, the appropriate dilutions must be determined for individual use.

### Data



Staining of C57BL/6 murine splenocytes cells with APC Anti-Mouse CD45R/B220 Antibody and PE Anti-Mouse CD20 Antibody[SA271G2] (left) or PE Rat IgG2b; $\kappa$  Isotype Control (right). Total viable cells were used for analysis.

### Preparation & Storage

Storage	Keep as concentrated solution. This product can be stored at 2-8°C for 12 months. Please protected from prolonged exposure to light and do not freeze.
Shipping	Ice bag

### Antigen Information

Uniprot ID	P19437
Gene ID	12482

### For Research Use Only

## Background

CD20 is a 33-37 kD protein, a member of the MS4A family, with four transmembrane spanning regions that present as a homo-oligomeric complexes in the cell surface when associating with MHC class I and II, CD53, CD81, and CD82. CD20 is expressed on B cells and a subset of T cells, but not on plasma cells. CD20 regulates B-cell activation and proliferation. Its ligation promotes transmembrane Ca<sup>2+</sup> trafficking. CD20 is an important therapeutic target in the treatment of B cell lymphomas and leukemias.