

Recombinant mouse IGF1/IGF- I/IGF-1 protein (His Tag)

Catalog Number: PDEM100305



Note: Centrifuge before opening to ensure complete recovery of vial contents.

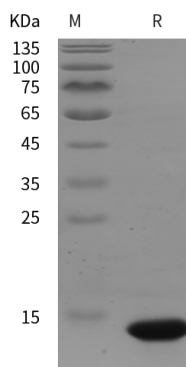
Description

Species	Mouse
Source	E.coli-derived Mouse IGF1 protein Ala48-Met153, with an N-terminal His
Mol_Mass	11.6 kDa
Accession	P05017
Bio-activity	Not validated for activity

Properties

Purity	> 95% as determined by reducing SDS-PAGE.
Endotoxin	< 10 EU/mg of the protein as determined by the LAL method
Storage	Generally, lyophilized proteins are stable for up to 12 months when stored at -20 to -80 °C. Reconstituted protein solution can be stored at 4-8°C for 2-7 days. Aliquots of reconstituted samples are stable at < -20°C for 3 months.
Shipping	This product is provided as lyophilized powder which is shipped with ice packs.
Formulation	Lyophilized from a 0.2 µm filtered solution in PBS with 5% Trehalose and 5% Mannitol.
Reconstitution	It is recommended that sterile water be added to the vial to prepare a stock solution of 0.5 mg/mL. Concentration is measured by UV-Vis.

Data



> 95 % as determined by reducing SDS-PAGE.

Background

Insulin-like growth factor I (IGF1) belongs to the family of insulin-like growth factors that are structurally homologous to proinsulin. Mouse IGF-I is synthesized as two precursor isoforms with alternate N- and C-terminal propeptides. These isoforms are differentially expressed by various tissues. Mature mouse IGF-I shares 94% and 99% aa sequence identity with human and rat IGF-I, respectively, and exhibits cross-species activity. It shares 60% aa sequence identity with mature mouse IGF-II. IGF-I induces the proliferation, migration, and differentiation of a wide variety of cell types during development and postnatally. It plays an important role in muscle regeneration and tumor progression. IGF-I binds IGF-I R, IGF-II R, and the insulin receptor. IGF-I association with IGF binding proteins increases its plasma half-life and modulates its interactions with receptors.

For Research Use Only

A Reliable Research Partner in Life Science and Medicine
Tel: 400-999-2100

Email: techsupport@elabscience.cn

Web: www.elabscience.cn

Rev. V1.3