

## PerCP/Cyanine5.5 Anti-Mouse CD3 Antibody[17A2]

**Catalog Number:** E-AB-F1013J

**Note:** Centrifuge before opening to ensure complete recovery of vial contents.

### Description

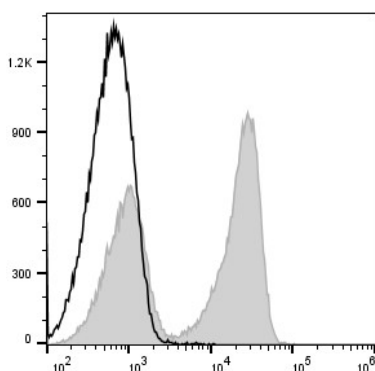
|                                |  |
|--------------------------------|--|
| <b>Reactivity</b>              | Mouse  |
| <b>Host</b>                    | Rat  |
| <b>Isotype</b>                 | Rat IgG2b, $\kappa$  |
| <b>Clone No.</b>               | 17A2   |
| <b>Isotype Control</b>         | PerCP/Cyanine5.5 Rat IgG2b, $\kappa$ Isotype Control[LTF-2] [Product E-AB-F09842J]   |
| <b>Conjugation</b>             | PerCP/Cyanine 5.5  |
| <b>Conjugation Information</b> | PerCP/Cyanine5.5 is designed to be excited by the blue laser (488 nm) and detected using an optical filter centered near 675 nm (e.g., a 690/50 nm bandpass filter). |
| <b>Storage Buffer</b>          | Phosphate buffered solution, pH 7.2, containing 0.09% stabilizer and 1% protein protectant.  |

### Applications

### Recommended usage

|            |  |
|------------|--|
| <b>FCM</b> | Each lot of this antibody is quality control tested by flow cytometric analysis. <b>The amount of the reagent is suggested to be used 5 <math>\mu</math>L of antibody per test (million cells in 100 <math>\mu</math>L staining volume or per 100 <math>\mu</math>L of whole blood).</b> Please check your vial before the experiment. Since applications vary, the appropriate dilutions must be determined for individual use. |
|------------|--|

### Data



Staining of C57BL/6 murine splenocytes with PerCP/Cyanine5.5 Anti-Mouse CD3 Antibody[17A2] (filled gray histogram) or PerCP/Cyanine5.5 Rat IgG2b,  $\kappa$  Isotype Control (empty black histogram). Total viable cells were used for analysis.

### Preparation & Storage

|                 |   |
|-----------------|---|
| <b>Storage</b>  | Keep as concentrated solution.<br>This product can be stored at 2-8°C for 12 months. Please protected from prolonged exposure to light and do not freeze. |
| <b>Shipping</b> | Ice bag   |

### Antigen Information

|                        |  |
|------------------------|--|
| <b>Alternate Names</b> | CD3;CD3E/D/G/Z;CD3e/d/g/z;T-cell surface glycoprotein CD 3epsilon/delta/gamma/zeta chain |
|------------------------|--|

### For Research Use Only

|                   |   |
|-------------------|---|
| <b>Uniprot ID</b> | P04235;P11942;P22646;P24161   |
| <b>Gene ID</b>    | 12502   |
| <b>Background</b> | CD3, also known as T3, is a member of the Ig superfamily and primarily expressed on T cells, NK-T cells, and at different levels on thymocytes during T cell differentiation. CD3 is composed of CD3 $\epsilon$ , $\delta$ , $\gamma$ and $\zeta$ chains. It forms a TCR complex by associating with TCR $\alpha/\beta$ or $\gamma/\delta$ chains. CD3 plays a critical role in TCR signal transduction, T cell activation, and antigen recognition by binding the peptide/MHC antigen complex. |

## For Research Use Only