

# Cyclin B1 Polyclonal Antibody

Catalog Number: E-AB-70114

4 Publications



**Note:** Centrifuge before opening to ensure complete recovery of vial contents.

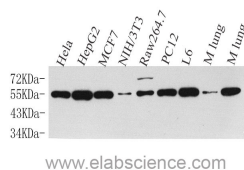
## Description

<b>Reactivity</b>	Human, Mouse, Rat
<b>Immunogen</b>	KLH conjugated Synthetic peptide corresponding to Mouse Cyclin B1
<b>Host</b>	Rabbit
<b>Isotype</b>	IgG
<b>Purification</b>	Affinity purification
<b>Conjugation</b>	Unconjugated
<b>Formulation</b>	PBS with 0.02% sodium azide, 1% protective protein and 50% glycerol, pH7.4

## Applications Recommended Dilution

<b>WB</b>	1:500-1:2000
<b>IHC</b>	1:300-1:500
<b>IF</b>	1:100-1:300

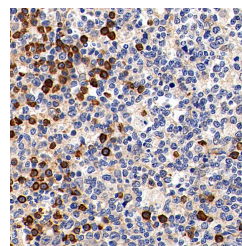
## Data



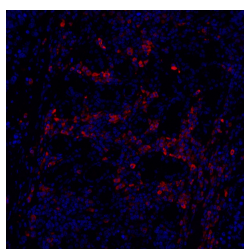
www.elabscience.com

Western Blot analysis of various samples using Cyclin B1 Polyclonal Antibody at dilution of 1:500.

**Observed Mw: 55kDa**  
**Calculated Mw: 55kDa**



Immunohistochemistry analysis of paraffin-embedded Human tonsil using Cyclin B1 Polyclonal Antibody at dilution of 1:300.



Immunofluorescence analysis of paraffin-embedded Human lung cancer using Cyclin B1 Polyclonal Antibody at dilution of 1:100.

## Preparation & Storage

**Storage** Store at -20°C. Avoid freeze / thaw cycles.

## Background

G2/mitotic-specific cyclin-B1 is a protein that in humans is encoded by the CCNB1 gene. The protein encoded by this

## For Research Use Only

A Reliable Research Partner in Life Science and Medicine

Toll-free: 1-888-852-8623

Web: [www.elabscience.com](http://www.elabscience.com)

Tel: 1-832-243-6086

Email: [techsupport@elabscience.com](mailto:techsupport@elabscience.com)

Fax: 1-832-243-6017

# Cyclin B1 Polyclonal Antibody

Catalog Number: E-AB-70114

4 Publications



gene is a regulatory protein involved in mitosis. The gene product complexes with p34(cdc2) to form the maturation-promoting factor (MPF). Two alternative transcripts have been found, a constitutively expressed transcript and a cell cycle-regulated transcript, that is expressed predominantly during G2/M phase. The different transcripts result from the use of alternate transcription initiation sites.

---

## For Research Use Only

A Reliable Research Partner in Life Science and Medicine

Toll-free: 1-888-852-8623

Web: [www.elabscience.com](http://www.elabscience.com)

Tel: 1-832-243-6086

Email: [techsupport@elabscience.com](mailto:techsupport@elabscience.com)

Fax: 1-832-243-6017