

## Gm13125 Polyclonal Antibody

**catalog number: E-AB-63235**

**Note:** Centrifuge before opening to ensure complete recovery of vial contents.

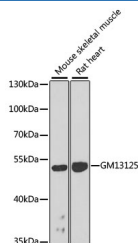
### Description

<b>Reactivity</b>	Human;Mouse;Rat
<b>Immunogen</b>	Recombinant fusion protein of mouse Gm13125 (NP_001108549.1).
<b>Host</b>	Rabbit
<b>Isotype</b>	IgG
<b>Purification</b>	Affinity purification
<b>Buffer</b>	Phosphate buffered solution, pH 7.4, containing 0.05% stabilizer and 50% glycerol.

### Applications

Applications	Recommended Dilution
<b>WB</b>	1:500-1:2000
<b>IHC</b>	1:100-1:200

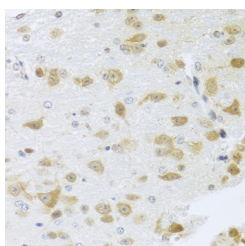
### Data



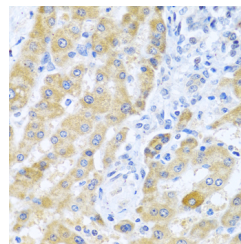
Western blot analysis of extracts of various cell lines using Gm13125 Polyclonal Antibody at dilution of 1:1000.

**Observed-MW:55 kDa**

**Calculated-MW:55 kDa**



Immunohistochemistry of paraffin-embedded Mouse brain using Gm13125 Polyclonal Antibody at dilution of 1:100 (40x lens).



Immunohistochemistry of paraffin-embedded Human liver cancer using Gm13125 Polyclonal Antibody at dilution of 1:100 (40x lens).

### Preparation & Storage

<b>Storage</b>	Store at -20°C Valid for 12 months. Avoid freeze / thaw cycles.
<b>Shipping</b>	The product is shipped with ice pack, upon receipt, store it immediately at the temperature recommended.

### Background

PRAMEF20 (PRAME Family Member 20) is a Protein Coding gene. Diseases associated with PRAMEF20 include Dandy-Walker Syndrome. Gene Ontology (GO) annotations related to this gene include retinoic acid receptor binding. An important paralog of this gene is PRAMEF6.

### For Research Use Only