

PE/Elab Fluor® 594 Anti-Human CD20 Antibody[Rituximab]

Catalog Number: AN00776P

Note: Centrifuge before opening to ensure complete recovery of vial contents.

Description

Reactivity	Human
Host	Human
Isotype	Human IgG1, κ
Clone No.	Rituximab
Isotype Control	PE/Elab Fluor® 594 Anti-Human IgG1 Isotype Control Antibody[MOPC21.1] [Product AN00840P]
Conjugation	PE/Elab Fluor® 594
Conjugation Information	PE/Elab Fluor® 594 is designed to be excited by the blue (488 nm), Green (532 nm) and yellow-green (561 nm) lasers and detected using an optical filter centered near 620 nm (e.g., a 610/20 nm bandpass filter).
Storage Buffer	Phosphate buffered solution, pH 7.2, containing 0.09% stabilizer.

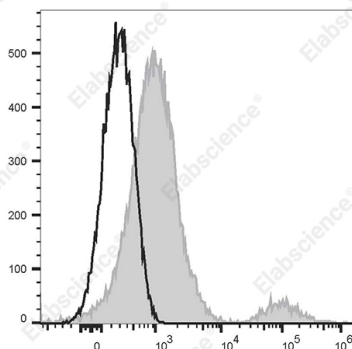
Applications

FCM

Recommended usage

Each lot of this antibody is quality control tested by flow cytometric analysis. **The amount of the reagent is suggested to be used 5 μ L of antibody per test (million cells in 100 μ L staining volume or per 100 μ L of whole blood).** Please check your vial before the experiment. Since applications vary, the appropriate dilutions must be determined for individual use.

Data



Human peripheral blood lymphocytes are stained with

PE/Elab Fluor® 594 Anti-Human CD20 Antibody[Rituximab] (filled gray histogram). Unstained lymphocytes (empty black histogram) are used as control.

Preparation & Storage

Storage	Keep as concentrated solution. This product can be stored at 2-8°C for 24 months. Please protected from prolonged exposure to light and do not freeze.
Shipping	Ice bag

Antigen Information

Alternate Names	B1;Bp35;LEU-16;MS4A1;AN007760
Uniprot ID	P11836

For Research Use Only

Gene ID

931

Background

CD20 is expressed on pre-B-cells, naive and activated B cells, memory B cells, and at lower levels on a small subset of T cells but is absent from plasmablasts and plasma cells. It is also expressed on most malignant B cells and CD20-positive T-cell lymphomas. CD20 functions in mediating calcium transport and B cell activation, differentiation, and survival.