

Recombinant Human UBE2V2/DDVIT1 Protein (His Tag)

Catalog Number: PKSH033191

Note: Centrifuge before opening to ensure complete recovery of vial contents.

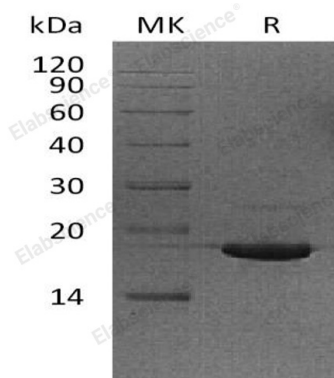
Description

Species	Human
Source	E.coli-derived Human UBE2V2/DDVIT1 protein Met 1-Asn145, with an N-terminal His
Calculated MW	18.5 kDa
Observed MW	18 kDa
Accession	Q15819
Bio-activity	Not validated for activity

Properties

Purity	> 95 % as determined by reducing SDS-PAGE.
Concentration	Subject to label value.
Endotoxin	< 1.0 EU per µg of the protein as determined by the LAL method.
Storage	Store at < -20°C, stable for 6 months. Please minimize freeze-thaw cycles.
Shipping	This product is provided as liquid. It is shipped at frozen temperature with blue ice/gel packs. Upon receipt, store it immediately at < - 20°C.
Formulation	Supplied as a 0.2 µm filtered solution of 50mm HEPES, 150mM NaCl, pH 7.0.

Data



> 95 % as determined by reducing SDS-PAGE.

Background

Ubiquitin-Conjugating Enzyme E2 Variant 2 (UBE2V2) is an enzyme that belongs to the ubiquitin-conjugating enzyme family. UBE2V2 can be detected in the placenta, colon, liver, and skin. It forms a heterodimer with UBE2N. The UBE2V2/UBE2N heterodimer catalyzes the synthesis of non-canonical poly-ubiquitin chains and which leads to protein degradation by the proteasome. UBE2V2 mediates transcriptional activation of target genes. It plays a role in the control of progress through the cell cycle and differentiation. It also plays a role in the error-free DNA repair pathway and contributes to the survival of cells after DNA damage.

For Research Use Only

Toll-free: 1-888-852-8623
Web: www.elabscience.com

Tel: 1-832-243-6086
Email: techsupport@elabscience.com

Fax: 1-832-243-6017