

MRPL20 Polyclonal Antibody

catalog number: E-AB-18777

Note: Centrifuge before opening to ensure complete recovery of vial contents.

Description

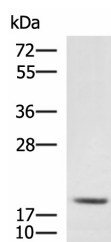
Reactivity	Human;Mouse
Immunogen	Fusion protein of human MRPL20
Host	Rabbit
Isotype	IgG
Purification	Antigen affinity purification
Conjugation	Unconjugated
Buffer	Phosphate buffered solution, pH 7.4, containing 0.05% stabilizer and 50% glycerol.

Applications

Recommended Dilution

WB	1:500-1:2000
IHC	1:50-1:200

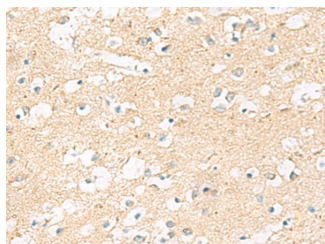
Data



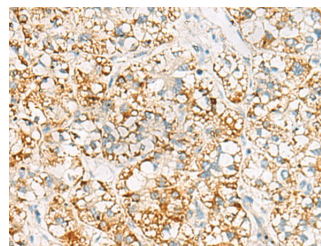
Western blot analysis of RAW264.7 cell lysate using MRPL20 Polyclonal Antibody at dilution of 1:900

Observed-MV:Refer to figures

Calculated-MV:17 kDa



Immunohistochemistry of paraffin-embedded Human brain tissue using MRPL20 Polyclonal Antibody at dilution of 1:60(x200)



Immunohistochemistry of paraffin-embedded Human liver cancer tissue using MRPL20 Polyclonal Antibody at dilution of 1:60(x200)

Preparation & Storage

Storage	Store at -20°C Valid for 12 months. Avoid freeze / thaw cycles.
Shipping	The product is shipped with ice pack, upon receipt, store it immediately at the temperature recommended.

Background

For Research Use Only

MRPL20 is one of more than 70 protein components of mitochondrial ribosomes that are encoded by the nuclear genome. MRPL20 is a subunit of the 39S mitochondrial ribosome. Mitochondrial ribosomes (mitoribosomes) consist of a small 28S subunit and a large 39S subunit. They have an estimated 75% protein to rRNA composition compared to prokaryotic ribosomes, where this ratio is reversed. Another difference between mammalian mitoribosomes and prokaryotic ribosomes is that the latter contain a 5S rRNA. Among different species, the proteins comprising the mitoribosome differ greatly in sequence, and sometimes in biochemical properties, which prevents easy recognition by sequence homology.