

PE/Cyanine5 Anti-Human CD11a Antibody[HI111]

Catalog Number: E-AB-F1316G

Note: Centrifuge before opening to ensure complete recovery of vial contents.

Description

Reactivity	Human
Host	Mouse
Isotype	Mouse IgG1, κ
Clone No.	HI111
Isotype Control	PE/Cyanine5 Mouse IgG1, κ Isotype Control[MOPC-21] [Product E-AB-F09792G]
Conjugation	PE/Cyanine 5
Conjugation Information	PE/Cyanine5 is designed to be excited by the Blue (488 nm), Green (532 nm) and yellow-green (561 nm) lasers and detected using an optical filter centered near 670 nm (e.g., a 690/50 nm bandpass filter).
Storage Buffer	Phosphate buffered solution, pH 7.2, containing 0.09% sodium azide and 1% BSA.

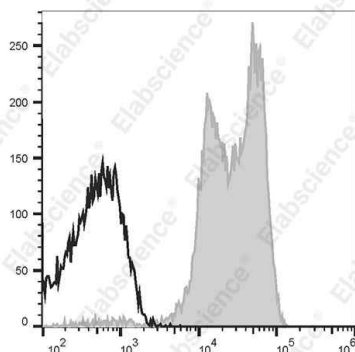
Applications

Recommended usage

FCM

Each lot of this antibody is quality control tested by flow cytometric analysis. **The amount of the reagent is suggested to be used 5 μL of antibody per test (million cells in 100 μL staining volume or per 100 μL of whole blood).** Please check your vial before the experiment. Since applications vary, the appropriate dilutions must be determined for individual use.

Data



Human peripheral blood lymphocytes are stained with PE/Cyanine5 Anti-Human CD11a Antibody[HI111] (filled gray histogram) or PE/Cyanine5 Mouse IgG1, κ Isotype Control (empty black histogram).

Preparation & Storage

Storage	Keep as concentrated solution. This product can be stored at 2-8°C for 12 months. Please protected from prolonged exposure to light and do not freeze.
Shipping	Ice bag

Antigen Information

Alternate Names	CD11 antigen-like family member A;CD11a;Integrin alpha-L;ltgal;LFA-1A;Ly-15; Lymphocyte antigen 15
Uniprot ID	P20701

For Research Use Only

Gene ID

3683

Background

CD11a is a 170-180 kD type I transmembrane glycoprotein also known as LFA-1 α chain and integrin α L subunit. CD11a non-covalently associates with integrin β 2 (CD18) to form LFA-1. It is expressed on all leukocytes, including B and T lymphocytes, monocytes, macrophages, neutrophils, basophils and eosinophils. It is absent on non-hematopoietic tissues and platelets. CD11a plays a central role in leukocyte cell-cell interactions and is important in lymphocyte costimulation. CD11a/CD18 binds to ICAM-1 (CD54), ICAM-2 (CD102), and ICAM-3 (CD50).