

Recombinant CUEDC2 Monoclonal Antibody

catalog number: AN300233P

Note: Centrifuge before opening to ensure complete recovery of vial contents.

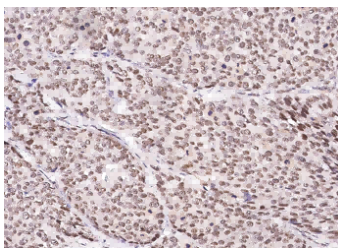
Description

Reactivity	Human
Immunogen	Recombinant Human CUEDC2 protein
Host	Rabbit
Isotype	IgG
Clone	4F3
Purification	Protein A
Buffer	0.2 µm filtered solution in PBS

Applications Recommended Dilution

IHC-P	1:500-1:2000
--------------	--------------

Data



Immunohistochemistry of paraffin-embedded human breast carcinoma using CUEDC2 Monoclonal Antibody at dilution of 1:1000.

Preparation & Storage

Storage	This antibody can be stored at 2°C-8°C for one month without detectable loss of activity. Antibody products are stable for twelve months from date of receipt when stored at -20°C to -80°C. Preservative-Free. Avoid repeated freeze-thaw cycles.
Shipping	Ice bag

Background

Down-regulates ESR1 protein levels through the ubiquitination-proteasome pathway, regardless of the presence of 17 beta-estradiol. Also involved in 17 beta-estradiol-induced ESR2 degradation. Controls PGR protein levels through a similar mechanism.

For Research Use Only