

Recombinant Mouse Adiponectin/AdipoQ Protein (Human Cells, His Tag)

Catalog Number: PKSM040961

Note: Centrifuge before opening to ensure complete recovery of vial contents.

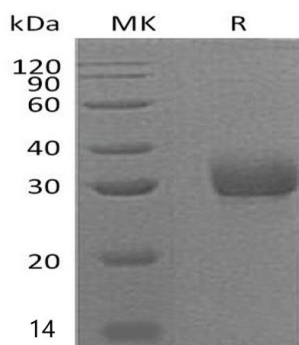
Description

Species	Mouse
Source	HEK293 Cells-derived Mouse Adiponectin;AdipoQ protein Glu18-Asn247 , with an C-terminal His
Calculated MW	25.7 kDa
Observed MW	30 kDa
Accession	Q60994
Bio-activity	Not validated for activity

Properties

Purity	> 95 % as determined by reducing SDS-PAGE.
Endotoxin	< 1.0 EU per µg of the protein as determined by the LAL method.
Storage	Generally, lyophilized proteins are stable for up to 12 months when stored at -20 to -80 °C. Reconstituted protein solution can be stored at 4-8°C for 2-7 days. Aliquots of reconstituted samples are stable at < -20°C for 3 months.
Shipping	This product is provided as lyophilized powder which is shipped with ice packs.
Formulation	Lyophilized from a 0.2 µm filtered solution of 20mM PB,150mM NaCl,pH7.4. Normally 5% - 8% trehalose, mannitol and 0.01% Tween 80 are added as protectants before lyophilization.
Reconstitution	Please refer to the specific buffer information in the printed manual.

Data



> 95 % as determined by reducing SDS-PAGE.

Background

Adiponectin is a secreted protein. It is synthesized exclusively by adipocytes and secreted into plasma. Adiponectin is an important adipokine that is involved in the control of fat metabolism and insulin sensitivity, with direct anti-diabetic, anti-atherogenic and anti-inflammatory activities. Adiponectin stimulates AMPK phosphorylation and activates in the liver and the skeletal muscle, enhancing glucose utilization and fatty-acid combustion. Adiponectin also antagonizes TNF- α by negatively regulating its expression in various tissues such as liver and macrophages, and also by counteracting its effects. It inhibits endothelial NF- κ -B signaling through a cAMP-dependent pathway. Adiponectin may play a role in cell growth, angiogenesis and tissue remodeling by binding and sequestering various growth factors with distinct binding affinities, depending on the type of complex: LMW, MMW or HMW.