

## ATF3 Polyclonal Antibody

**catalog number: E-AB-93099**

**Note:** Centrifuge before opening to ensure complete recovery of vial contents.

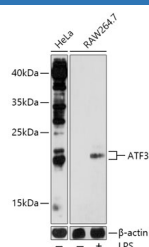
### Description

|                     |  |
|---------------------|--|
| <b>Reactivity</b>   | Human;Mouse  |
| <b>Immunogen</b>    | Recombinant fusion protein of human ATF3   |
| <b>Host</b>         | Rabbit   |
| <b>Isotype</b>      | IgG  |
| <b>Purification</b> | Affinity purification  |
| <b>Buffer</b>       | Phosphate buffered solution, pH 7.4, containing 0.05% stabilizer and 50% glycerol. |

### Applications

|           |              |
|-----------|--------------|
| <b>WB</b> | 1:500-1:2000 |
|-----------|--------------|

### Data



Western blot analysis of extracts of various cell lines using ATF3 Polyclonal Antibody at 1:1000 dilution. Raw264.7 cells were treated by LPS (1 µg/mL) at 37°C for 8 hours.

**Observed-MV:21 kDa**

**Calculated-MV:12 kDa/13 kDa/14 kDa/15 kDa/20 kDa**

### Preparation & Storage

|                 |  |
|-----------------|--|
| <b>Storage</b>  | Store at -20°C Valid for 12 months. Avoid freeze / thaw cycles.  |
| <b>Shipping</b> | The product is shipped with ice pack, upon receipt, store it immediately at the temperature recommended. |

### Background

This gene encodes a member of the mammalian activation transcription factor/cAMP responsive element-binding (CRE B) protein family of transcription factors. This gene is induced by a variety of signals, including many of those encountered by cancer cells, and is involved in the complex process of cellular stress response. Multiple transcript variants encoding different isoforms have been found for this gene. It is possible that alternative splicing of this gene may be physiologically important in the regulation of target genes.

### For Research Use Only