

## ZCCHC4 Polyclonal Antibody

**catalog number: E-AB-65738**

**Note:** Centrifuge before opening to ensure complete recovery of vial contents.

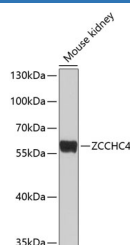
### Description

<b>Reactivity</b>	Mouse
<b>Immunogen</b>	Recombinant fusion protein of human ZCCHC4 (NP_079212.2).
<b>Host</b>	Rabbit
<b>Isotype</b>	IgG
<b>Purification</b>	Affinity purification
<b>Buffer</b>	Phosphate buffered solution, pH 7.4, containing 0.05% stabilizer and 50% glycerol.

### Applications Recommended Dilution

<b>WB</b>	1:500-1:2000
-----------	--------------

### Data



Western blot analysis of extracts of Mouse kidney using ZCCHC4 Polyclonal Antibody at dilution of 1:1000.

**Observed-MV:59 kDa**

**Calculated-MV:25 kDa/58 kDa/59 kDa**

### Preparation & Storage

<b>Storage</b>	Store at -20°C Valid for 12 months. Avoid freeze / thaw cycles.
<b>Shipping</b>	The product is shipped with ice pack, upon receipt, store it immediately at the temperature recommended.

### Background

ZCCHC4 (Zinc Finger CCHC-Type Containing 4) is a Protein Coding gene. Diseases associated with ZCCHC4 include Miyoshi Muscular Dystrophy 3. Gene Ontology (GO) annotations related to this gene include nucleic acid binding and methyltransferase activity.

### For Research Use Only