

# ECM1 Polyclonal Antibody

Catalog Number: E-AB-19389

1 Publications



**Note:** Centrifuge before opening to ensure complete recovery of vial contents.

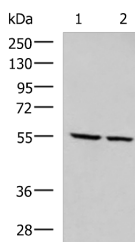
## Description

<b>Reactivity</b>	Human
<b>Immunogen</b>	Synthetic peptide of human ECM1
<b>Host</b>	Rabbit
<b>Isotype</b>	IgG
<b>Purification</b>	Antigen affinity purification
<b>Conjugation</b>	Unconjugated
<b>Formulation</b>	PBS with 0.05% NaN <sub>3</sub> and 40% Glycerol, pH7.4

## Applications Recommended Dilution

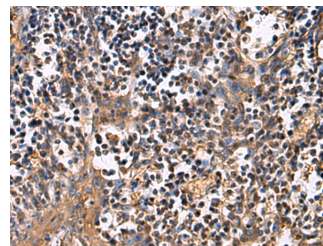
<b>WB</b>	1:500-1:2000
<b>IHC</b>	1:25-1:50
<b>ELISA</b>	1:5000-1:10000

## Data

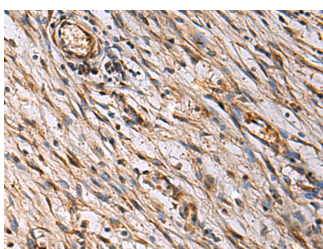


Western blot analysis of LOVO and LO2 cell lysates using ECM1 Polyclonal Antibody at dilution of 1:650

**Observed MW: Refer to figures**  
**Calculated Mw: 61 kDa**



Immunohistochemistry of paraffin-embedded Human tonsil tissue using ECM1 Polyclonal Antibody at dilution of 1:25 (×200)



Immunohistochemistry of paraffin-embedded Human colorectal cancer tissue using ECM1 Polyclonal Antibody at dilution of 1:25 (×200)

## Preparation & Storage

**Storage** Store at -20°C. Avoid freeze / thaw cycles.

## Background

Extracellular matrix protein 1 (ECM1) is a glycoprotein involved in a number of biological processes such as bone

## For Research Use Only

A Reliable Research Partner in Life Science and Medicine

Toll-free: 1-888-852-8623

Web: [www.elabscience.com](http://www.elabscience.com)

Tel: 1-832-243-6086

Email: [techsupport@elabscience.com](mailto:techsupport@elabscience.com)

Fax: 1-832-243-6017

# ECM1 Polyclonal Antibody

Catalog Number: E-AB-19389

1 Publications



formation, skin differentiation, cell proliferation, and promotes angiostasis. Pathologically, ECM1 contributes to the formation and metastasis of several types of cancer including breast, thyroid and hepatocellular cancers. (21128013) It inhibits MMP9 proteolytic activity.

---

## For Research Use Only

A Reliable Research Partner in Life Science and Medicine

Toll-free: 1-888-852-8623

Tel: 1-832-243-6086

Fax: 1-832-243-6017

Web: [www.elabscience.com](http://www.elabscience.com)

Email: [techsupport@elabscience.com](mailto:techsupport@elabscience.com)