

Recombinant Mouse IL13RA1 Protein (AVI & His Tag)

Catalog Number: PKSM041372



Note: Centrifuge before opening to ensure complete recovery of vial contents.

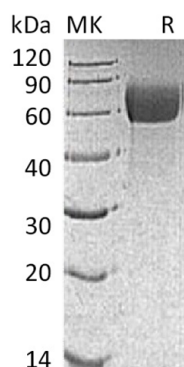
Description

Species	Mouse
Mol_Mass	38.7 kDa
Accession	O09030
Bio-activity	Not validated for activity

Properties

Purity	> 95 % as determined by reducing SDS-PAGE.
Endotoxin	< 1.0 EU per µg of the protein as determined by the LAL method.
Storage	Generally, lyophilized proteins are stable for up to 12 months when stored at -20 to -80 °C. Reconstituted protein solution can be stored at 4-8°C for 2-7 days. Aliquots of reconstituted samples are stable at < -20°C for 3 months.
Shipping	This product is provided as lyophilized powder which is shipped with ice packs.
Formulation	Lyophilized from a 0.2 µm filtered solution of PBS, pH 7.4. Normally 5% - 8% trehalose, mannitol and 0.01% Tween 80 are added as protectants before lyophilization. Please refer to the specific buffer information in the printed manual.
Reconstitution	Please refer to the printed manual for detailed information.

Data



> 95 % as determined by reducing SDS-PAGE.

Background

Interleukin-13 receptor subunit alpha-1(IL-13RA1), also known as NR4, belongs to the hemopoietin receptor family. Interleukin-13 receptor is a complex of IL4R, IL13RA1, and possibly other components. It interacts with TRAF3IP1 and binds with low affinity to interleukin-13(IL3). IL-13RA1, together with IL4RA, can form a functional receptor for IL13. It also serves as an alternate accessory protein to the common cytokine receptor gamma chain for interleukin-4 (IL4) signaling, but cannot replace the function of IL2RG in allowing enhanced interleukin-2 (IL2) binding activity. The WSXWS motif in domains appears to be necessary for proper protein folding and thereby efficient intracellular transport and cell-surface receptor binding.

For Research Use Only

A Reliable Research Partner in Life Science and Medicine
Tel:400-999-2100

Email:techsupport@elabscience.cn

Web:www.elabscience.cn

Rev. V3.2